



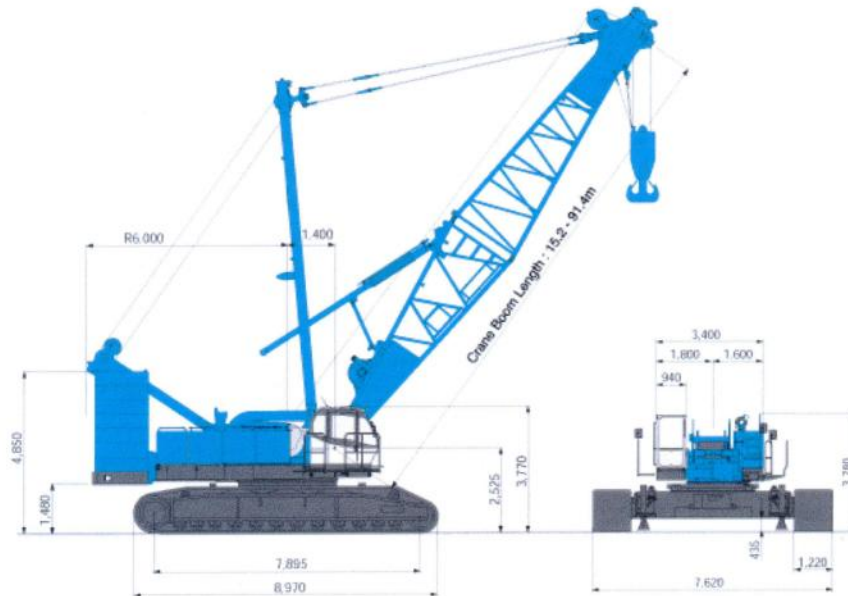
CRANE KOBELCO CKE 2500-2

CKE2500

Max. Lifting Capacity: 250 t x 4.6 m
Max. Crane Boom Length: 91.4 m
Max. Fixed Jib Combination: 76.2 m + 30.5m
Max. Luffing Jib Combination: 61.0 m + 61.0 m



Unit : mm



Main Specifications (Model: CKE2500-2)

Crane Boom	Max. Lifting Capacity	250 t x 4.6 m
	Max. Length	91.4 m
Luffing Boom	Max. Lifting Capacity	150 t x 7.0 m
	Max. Length	61.0 m
Long Boom	Max. Lifting Capacity	47.1 t x 12.8 m
	Long Boom Length	64.0 m - 91.4 m
Fixed Jib	Max. Lifting Capacity	27 t x 10.4 m
	Max. Combination	76.2 m + 30.5 m
Luffing Jib	Max. Lifting Capacity	80 t x 9.8 m

