

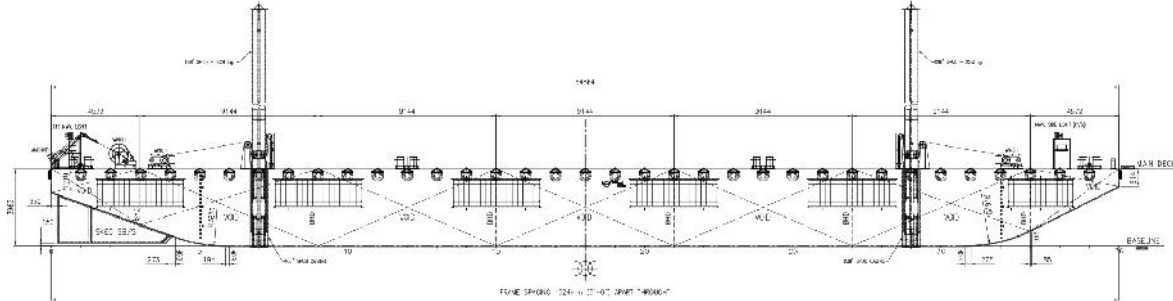


شركة الجزيرة للملاحة ذ.م.م  
AL JAZEERA SHIPPING CO. W.L.L.



# SPECIFICATION SHEET

**BARGE NAME: GTO 1901**  
**TYPE OF BARGE: SPUD**



## PRINCIPAL PARTICULARS

Built	2014
Builder	Nass Marine Services
Flag	Bahrain
Official No.	BN 7049
Class	ABS
Class no.	14262043
GRT	979
NRT	293
Deadweight (T)	2399
Displacement (T)	2940

## PRINCIPAL DIMENSIONS

Length (m) LOA	54.86
Breadth (m)	18.29
Depth (m)	3.96
Max. Draft	3.22

## CARGO CAPACITIES

Deck Area m <sup>2</sup>	Approx. 900
Deck Strength T/m <sup>2</sup>	15

Barge equipped with 2x spuds on Port and SB operated by individual winches

**ALL BARGES CAN BE FITTED WITH SPUD LEGS, SIDE WALLS, RAMP & MOORINGS  
BY REQUEST**

P.O.Box: 302, Manama, Kingdom of Bahrain  
Tel. : 17 728837, Fax: 17 728217, C.R.: 16316  
E-mail : almelaha@ajasco.com



DIMCO REGISTERED MEMBER  
Website : [www.ajasco.com](http://www.ajasco.com)

م.ب: ٣٠٢ - المنامة - مملكة البحرين  
تليفون: ١٧ ٧٢٨٨٣٧ - فاكس: ١٧ ٧٢٨٢١٧ - س.ت: ١٦٣١٦  
لبريد الالكتروني: [almelaha@ajasco.com](mailto:almelaha@ajasco.com)