

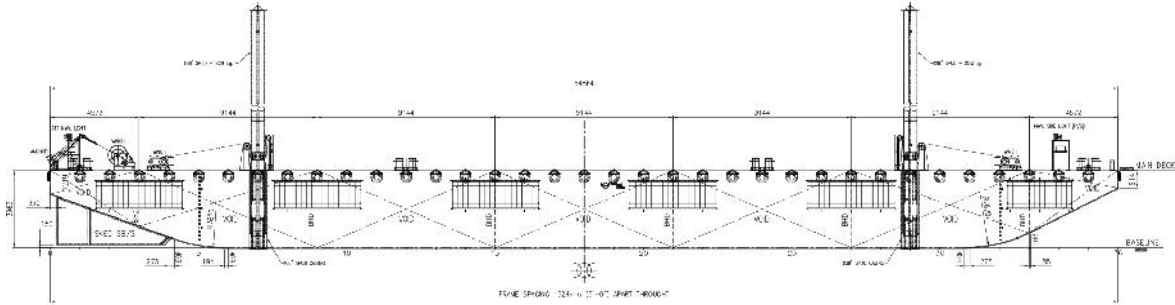


شركة الجزيرة للملاحة ذ.م.م
AL JAZEERA SHIPPING CO. W.L.L.



SPECIFICATION SHEET

BARGE NAME: GTO 199
TYPE OF BARGE: SPUD



PRINCIPAL PARTICULARS

Built	2014
Builder	Nass Marine Services
Flag	Bahrain
Official No.	BN 7046
Class	ABS
Class no.	14262042
GRT	979
NRT	293
Deadweight (T)	2399
Lightship (T)	541
Displacement (T)	2940

PRINCIPAL DIMENSIONS

Length (m) LOA	54.86
Breadth (m)	18.29
Depth (m)	3.96
Max. Draft	3.22

CARGO CAPACITIES

Deck Area m ²	Approx. 900
Deck Strength T/m ²	15

Barge equipped with 2x spuds on Port and SB operated by individual winches

**ALL BARGES CAN BE FITTED WITH SPUD LEGS, SIDE WALLS, RAMP & MOORINGS
BY REQUEST**

P.O.Box: 302, Manama, Kingdom of Bahrain
Tel. : 17 728837, Fax: 17 728217, C.R.: 16316
E-mail : almelaha@ajsco.com



DIMCO REGISTERED MEMBER
Website : www.ajsco.com

س.ب: ٣٠٢ - المنامة - مملكة البحرين
تليفون: ١٧ ٧٢٨٨٣٧ - فاكس: ١٧ ٧٢٨٢١٧ - س.ت: ١٦٣١٦
البريد الإلكتروني: almelaha@ajsco.com