

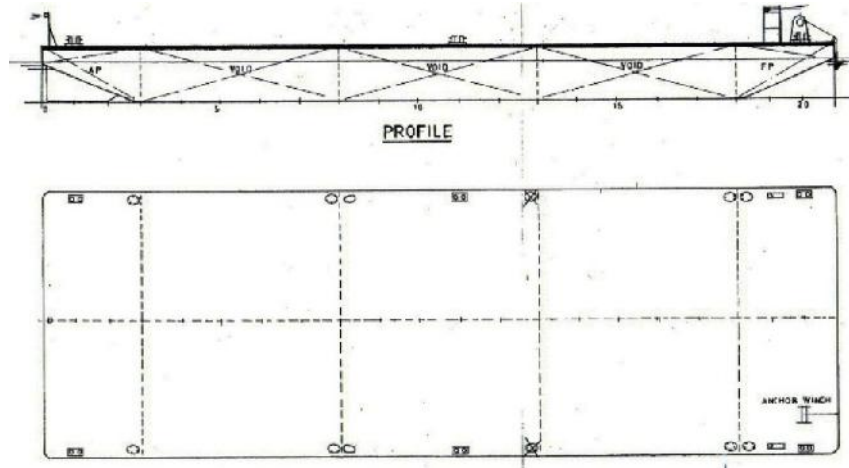


شركة الجزيرة للملاحة ذ.م.م  
AL JAZEERA SHIPPING CO. W.L.L.



# SPECIFICATION SHEET

**BARGE NAME: GTO XXXI**  
**TYPE OF BARGE: FLAT TOP**



## PRINCIPAL PARTICULARS

Built	2006
Builder	Kim Heng Marine Oilfield PTE, Singapore
Flag	Bahrain
Class	BV
Class no.	10479S
Official no.	BN 4047
GRT	272
NRT	82
Deadweight (T)	644
Lightship (T)	184
Displacement (T)	828

## PRINCIPAL DIMENSIONS

Length (m) LOA	36.58
Breadth (m)	12.19
Depth (m)	2.44
Max. Draft	1.86

## CARGO CAPACITIES

Deck Area m <sup>2</sup>	approx. 400
Deck Strength T/m <sup>2</sup>	10

**ALL BARGES CAN BE FITTED WITH SPUD LEGS, SIDE WALLS, RAMP AND MOORINGS  
BY REQUEST**

P.O.Box: 302, Manama, Kingdom of Bahrain  
Tel. : 17 728837, Fax: 17 728217, C.R.: 16316  
E-mail : almelaha@ajscsco.com



BIMCO REGISTERED MEMBER  
Website : [www.ajscsco.com](http://www.ajscsco.com)

ص.ب: ٣٠٢ - المنامة - مملكة البحرين  
تليفون: ١٧ ٧٢٨٨٣٧ - فاكس: ١٧ ٧٢٨٢١٧ - ص.ب: ١٦٣١٦  
البريد الإلكتروني: almelaha@ajscsco.com