

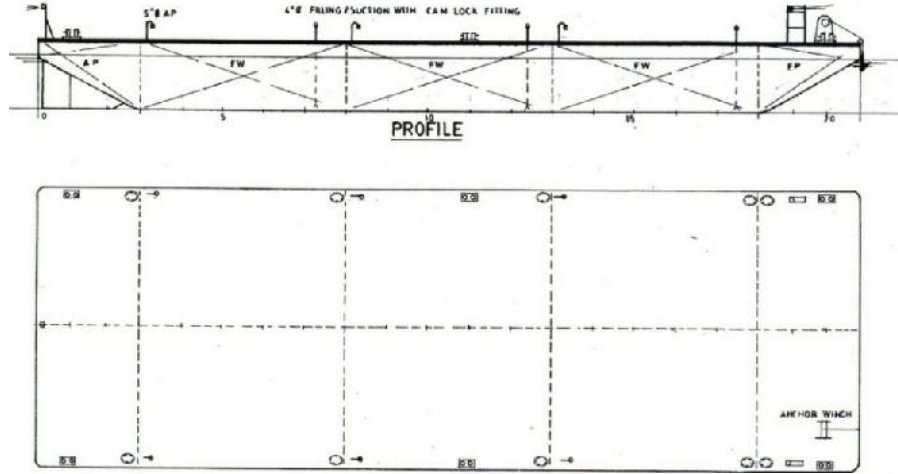


شركة الجزيرة للملاحة ذ.م.م
AL JAZEERA SHIPPING CO. W.L.L.



SPECIFICATION SHEET

BARGE NAME: GTO XXXII
TYPE OF BARGE: FRESH WATER



PRINCIPAL PARTICULARS

Built	2006
Builder	Kim Heng Marine Oilfield, Singapore
Flag	Bahrain
Class	BV
Class no.	10482V
Official no.	BN 4056
GRT	329
NRT	216
Deadweight (T)	850
Lightship (T)	168
Displacement (T)	1018

PRINCIPAL DIMENSIONS

Length (m) LOA	36.58
Breadth (m)	12.19
Depth (m)	3.05
Max. Draft	2.45

CARGO CAPACITIES

Deck Area (m ²)	400
Deck Strength (T/m ²)	10
Water Capacity (MT)	850
No. of Fresh Water Tanks	6
Manual Winch (T)	5
Stockless Anchor (Kg)	200

**ALL BARGES CAN BE FITTED WITH SPUD LEGS, SIDE WALLS, RAMPS & MOORINGS
BY REQUEST**

P.O.Box: 302, Manama, Kingdom of Bahrain
Tel. : 17 728837, Fax: 17 728217, C.R.: 16316
E-mail : almelaha@ajSCO.com



BIMCO REGISTERED MEMBER
Website : www.ajSCO.com

ص.ب: ٣٠٢ - المنامة - مملكة البحرين
تليفون: ١٧ ٧٢٨٨٣٧ - فاكس: ١٧ ٧٢٨٢١٧ - ص.ب: ١٦٣١٦
البريد الإلكتروني: almelaha@ajSCO.com