

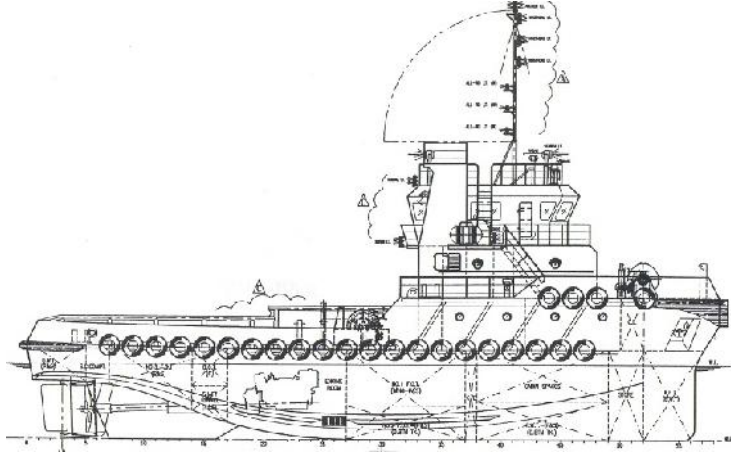


شركة الجزيرة للملاحة ذ.م.م
AL JAZEERA SHIPPING CO. W.L.L



SPECIFICATION SHEET

VESSEL NAME: SEA MAJESTIC
TYPE: TUG



PRINCIPAL PARTICULARS

Built	2006
Builder	Forward Marine E'prise SDN BHD Malaysia
Flag	Bahrain
Class	GL
Class no.	107413
Official no.	BN 5006
IMO no.	9419046
Call Sign	A9HS
GRT	298
NRT	90
Bollard Pull (t)	34

MACHINERY

Main Engines	Mitsubishi S12R-MPTK
Power	1500x2HP@1650 rpm
Generators	2xCummins Diesel 78Kw 415/230 Volts
Propellers	2xManganese/Bronze
Rudders	2x
Oily/Water Sep.	1xDFCS-0.25m ³ /hr
Sewage Treatment	WCH-0.5 15-25 Persons

DECK EQUIPMENT

Anchor Windlass	3T Hydr
Anchors	2x570Kg
Towing Winch	30T
Tugger Winch	5T
Complement	15 Persons

PRINCIPAL DIMENSIONS

Length (m) Reg.	29.70
Breadth (m)	9.00
Depth (m)	4.20
Max. Draft	3.50

CARGO CAPACITIES

Diesel Fuel Oil (T)	173
Potable Water (T)	46
Ballast (T)	32
Lub Oil Tank (T)	2

SPEED & CONSUMPTION

Max. Speed (Knots)	12
Daily Consumption (T)	5.0
Fuel Type	MDO

NAVIGATION EQUIPMENT

Furuno SSB	FS-1570
Furuno Immersat-C	Felcom-15
Furuno GPS	GP-32
Furuno RADAR	1832
Furuno NAVTEX	NX-700B
Furuno VHF GMDSS	FM-8800S
Sanyung EPIRB	SEP-406
Compass	Diako SR-150 PK
ICOM 2 Way Walkie Talkie	GM-1600
Furuno ECHO SOUNDER	FCV-620

Survivor Equipment

2x20 Men Liferaft
20xLifejackets