

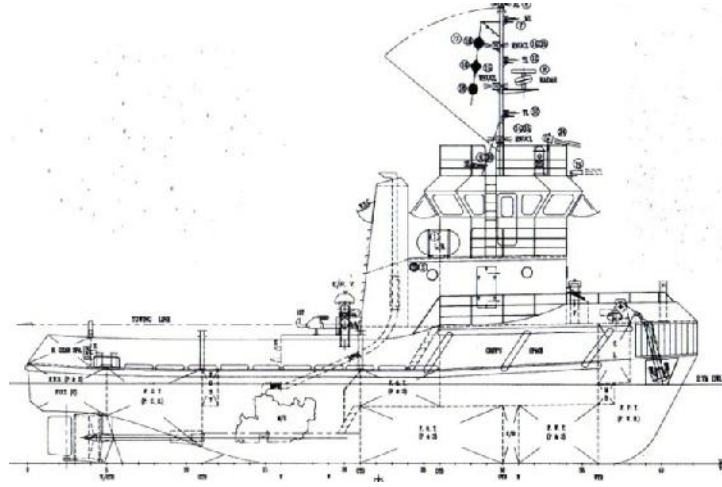


شركة الجزيرة للملاحة ذ.م.ك
AL JAZEERA SHIPPING CO. W.L.L



SPECIFICATION SHEET

VESSEL NAME: SEA POWER
TYPE: TUG BOAT



PRINCIPAL PARTICULARS

Built 1995
Builder Malaysia
Flag Bahrain
Class ABS
Class No 96175487
Official No BN 5099
IMO No 8890970
Call Sign A9D2856

GRT 134
NRT 45
Bollard Pull (t) 12

DECK EQUIPMENT

Main Engines 2 x Caterpillar 3412BT
Power 1080HP at 1800RPM
Generators 2 x Perkins - 20KVA
Propellers 2
Rudders 2

DECK EQUIPMENT

Tow Hook 1 x Pull Hock
Towing Wire / Rope 3.5" Polypropylene Rope
Anchors 2 x 310 KG
Anchor Windlass 1 x Plim 8U1

PRINCIPAL DIMENSIONS

Length (m) 23.50
Breadth (m) 7.32
Depth (m) 3.20
Max Draft (m) 2.70

CARGO CAPACITIES

Fuel Oil (m³) 117
Fresh Water (m³) 21
Ballast 48

SPEED & CONSUMPTION

Max Speed (knots) 12
Consumption (T/day) 2.5
Economical Speed (knots) 10.5

Fuel Type Marine Gas Oil

NAVIGATION EQUIPMENT

GPS 1 x Koden
Radar 1 x Furuno
Echo Sounder 1 x JMC
VHF Radio 1 x Sailor
1 x ICOM
SSB Radio 1 x ICOM
Navtex 1 x JMC
Magnetic Compass 1 x CPT 130
Rudder Indicator YES

P.O.Box: 302, Manama, Kingdom of Bahrain
Tel. : 17 728837, Fax: 17 728217, C.R.: 16316
E-mail : almelaha@ajsco.com



BIMCO REGISTERED MEMBER
Website : www.ajsco.com

ص.ب: ٣٠٢ - المنامة - مملكة البحرين
تليفون ١٧ ٧٢٨٨٣٧ - فاكس: ١٧ ٧٢٨٢١٧ - ص.ب: ١٦٣١٦
البريد الإلكتروني: almelaha@ajsco.com