

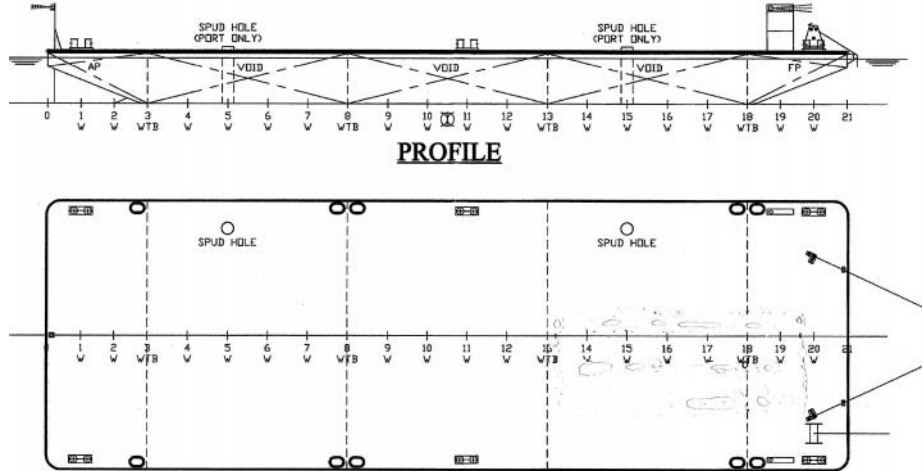


شركة الجزيرة للملاحة ذ.م.م.  
AL JAZEERA SHIPPING CO. W.L.L.



# SPECIFICATION SHEET

**BARGE NAME: GTO 1201**  
**TYPE OF BARGE: SPUD DECK CARGO**



## PRINCIPAL PARTICULARS

|                  |                              |
|------------------|------------------------------|
| Built            | 2008                         |
| Builder          | PT Natwell, Batam, Indonesia |
| Flag             | Bahrain                      |
| Official no.     | BN 5057                      |
| Class            | GL                           |
| Class no.        | 114766                       |
| GRT              | 259                          |
| NRT              | 78                           |
| Lightship (T)    |                              |
| Deadweight (T)   | 622                          |
| Displacement (T) | 767                          |

## PRINCIPAL DIMENSIONS

|                |       |
|----------------|-------|
| Length (m) LOA | 36.58 |
| Breadth (m)    | 12.19 |
| Depth (m)      | 2.44  |
| Max. Draft (m) | 1.88  |

## CARGO CAPACITIES

|                                |             |
|--------------------------------|-------------|
| Deck Area m <sup>2</sup>       | approx. 400 |
| Deck Strength T/m <sup>2</sup> | 10          |

**ALL BARGES CAN BE FITTED WITH SPUD LEGS, SIDE WALLS, RAMP AND MOORINGS  
BY REQUEST**

P.O.Box: 302, Manama, Kingdom of Bahrain  
Tel. : 17 728837, Fax: 17 728217, C.R.: 16316  
E-mail : almelaha@ajsco.com



BIMCO REGISTERED MEMBER  
Website : [www.ajsco.com](http://www.ajsco.com)

ص.ب: ٣٠٢ - المنامة - مملكة البحرين  
تليفون ١٧ ٧٢٨٨٣٧ - فاكس: ١٧ ٧٢٨٢١٧ - ص.ب: ١٦٣١٦  
البريد الإلكتروني: almelaha@ajsco.com