

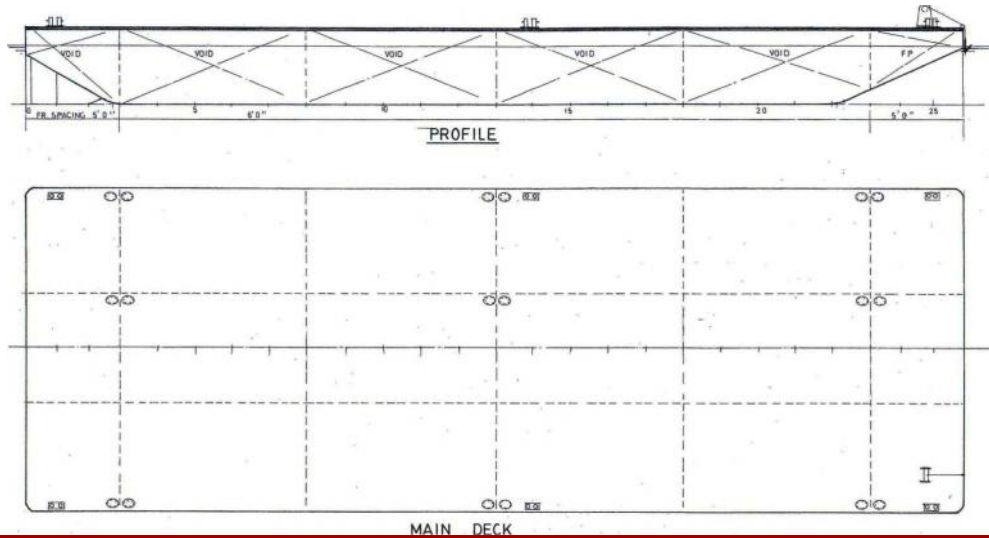


شركة الجزيرة للملاحة ذ.م.م  
AL JAZEERA SHIPPING CO. W.L.L.



# SPECIFICATION SHEET

**BARGE NAME: GTO 152**  
**TYPE OF BARGE: FLAT TOP**



## PRINCIPAL PARTICULARS

|                  |   |
|------------------|---|
| Built            | 2007                                    |
| Builder          | Nanjing Haiyue Shipping Making Co. Ltd. |
| Flag             | Bahrain                                 |
| Official No.     | BN 5015                                 |
| Class            | BV                                      |
| Class no.        | 12241H                                  |
| GRT              | 514                                     |
| NRT              | 154                                     |
| Deadweight (T)   | 1231                                    |
| Lightship (T)    | 301                                     |
| Displacement (T) | 1532                                    |

## PRINCIPAL DIMENSIONS

|             |       |
|-------------|-------|
| Length (m)  | 43.89 |
| Breadth (m) | 15.24 |
| Depth (m)   | 3.05  |
| Max. Draft  | 2.40  |

## CARGO CAPACITIES

|                                |             |
|--------------------------------|-------------|
| Deck Area m <sup>2</sup>       | approx. 600 |
| Deck Strength T/m <sup>2</sup> | 10          |

**ALL BARGES CAN BE FITTED WITH SPUD LEGS, SIDE WALLS, RAMP & MOORINGS  
BY REQUEST**

P.O.Box: 302, Manama, Kingdom of Bahrain  
Tel. : 17 728837, Fax: 17 728217, C.R.: 16316  
E-mail : almelaha@ajscsco.com



BIVCO REGISTERED MEMBER  
Website : [www.ajscsco.com](http://www.ajscsco.com)

ص.ب: ٣٠٢ - المنامة - مملكة البحرين  
تليفون ١٧ ٧٢٨٨٣٧ - فاكس ١٧ ٧٢٨٢١٧ - ص.ب: ١٦٣١٦  
البريد الإلكتروني: [almelaha@ajscsco.com](mailto:almelaha@ajscsco.com)