



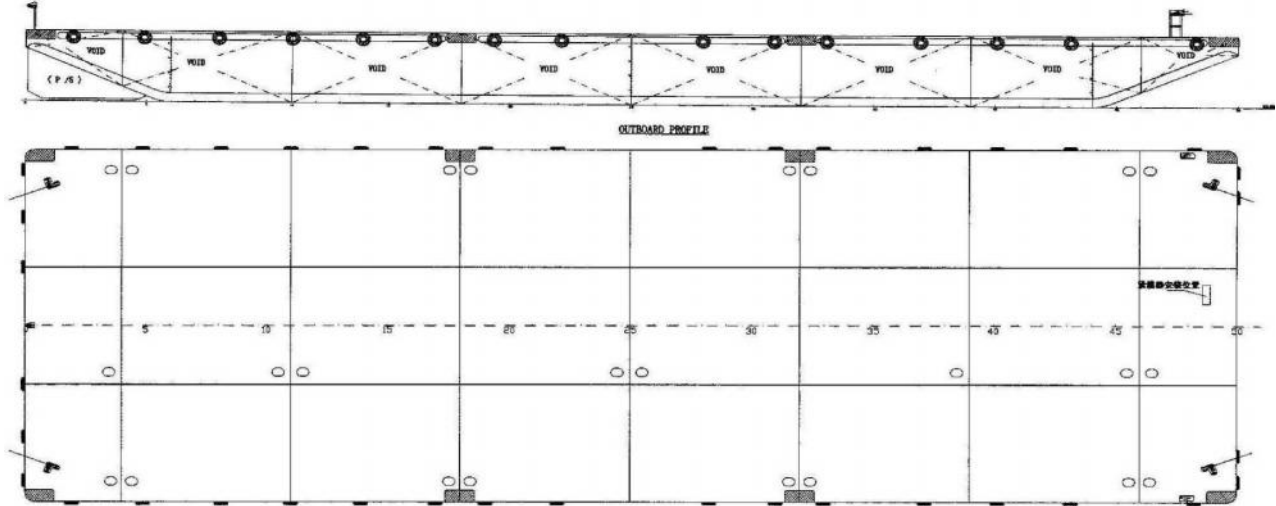
شركة الجزيرة للملاحة ذ.م.م.
AL JAZEERA SHIPPING CO. W.L.L.



SPECIFICATION SHEET

BARGE NAME: GTO 2507

TYPE OF BARGE: (Ballast) Flat Top



PRINCIPAL PARTICULARS		CARGO CAPACITIES	
Built	2010	Deck Area approx. m ²	1750
Builder	Nanjing Asiapride Shipbuilding, China	Deck Strength T/m ²	20
Flag	Bahrain	Tanks 1P/S to 8 P/S Ballast able	
Official No.	BN 6043	Total Tank Capacity	±6800 m ³
Class	ABS		
Class no.	10225564		
GRT	2305		
NRT	691		
Deadweight (T)	4965.5		
Displacement (T)	6090.5		
PRINCIPAL DIMENSIONS		PRINCIPAL DIMENSIONS	
Length (m) LOA	76.20	Stockless Anchor	Y
Breadth (m)	24.38	Anchor Winch	Y
Depth (m)	4.88	Towing Brackets	Pull Force 80T
Max. Draft (m)	3.62	Mooring Bollards	Y
Thickness: Deck	16 mm	Navigation Lights	Y
Sideshell	14 mm		
Bottom	12 mm		
(Hull #YH 10-07)			

ALL BARGES CAN BE FITTED WITH SPUD LEGS, SIDE WALLS, RAMP & MOORINGS BY REQUEST.

P.O.Box: 302, Manama, Kingdom of Bahrain
Tel. : 17 728837, Fax: 17 728217, C.R.: 16316
E-mail : almelaha@ajsco.com



BIMCO REGISTERED MEMBER
Website : www.ajsco.com

ص.ب: ٣٠٢ - المنامة - مملكة البحرين
تليفون: ١٧ ٧٢٨٨٣٧ - فاكس: ١٧ ٧٢٨٢١٧ - ص.ب: ٣٠٢
البريد الالكتروني: almelaha@ajsco.com