

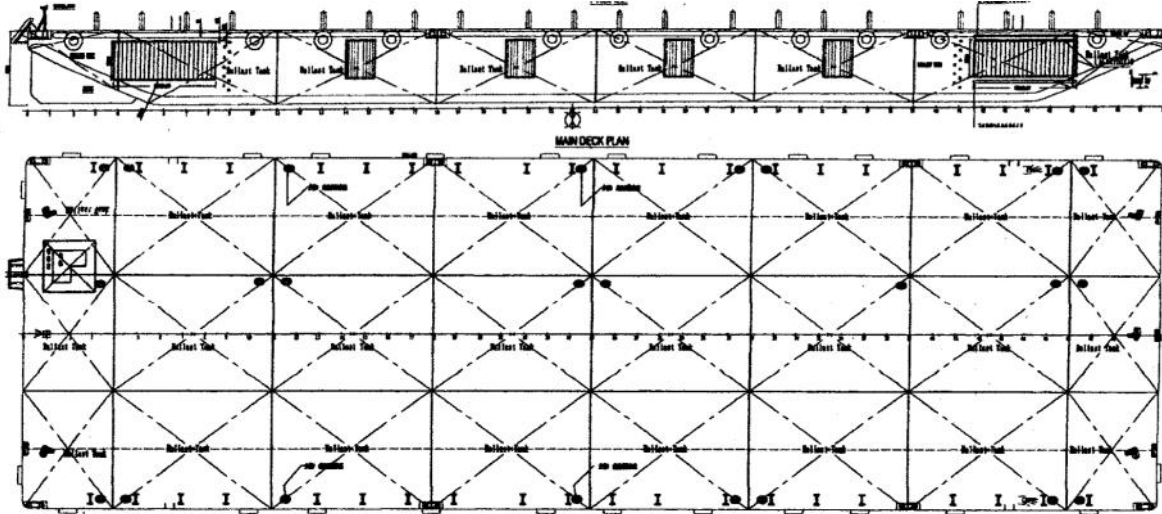


شركة الجزيرة للملاحة ذ.م.م  
AL JAZEERA SHIPPING CO. W.L.L.



# SPECIFICATION SHEET

**BARGE NAME: GTO 2509**  
**TYPE OF BARGE: (Ballast) Flat Top**



PRINCIPAL PARTICULARS		CARGO CAPACITIES	
Built	2012	Deck Area approx. m <sup>2</sup>	1400
Builder	Nanjiang Shipbuilding China	Deck Strength T/m <sup>2</sup>	20
Flag	Bahrain	Tanks 1P/C/S to 8 P/C/S Ballastable	
Official No.	BN 7027	Total Tank Capacity	±5250 m <sup>3</sup>
Class	BV		
Class no.	27124K		
GRT	2305		
NRT	691		
Deadweight (T)	4941		
Displacement (T)	6121		
PRINCIPAL DIMENSIONS		DECK EQUIPMENT	
Length (m) LOA	76.20 (73.18 LBP)	Stockless Anchor	1290 KG
Breadth (m)	24.38	Anchor Winch	Hand Operated
Depth (m)	4.88	Towing Brackets	2 sets SWL 80T
Max. Draft (m)	3.62	Mooring Bollards	8 x
Thickness: Deck 16 mm		Navigation Lights	3 x with Frame
Sideshell 14 mm		Stanchions 4' Height	20 x Port/StarB
Bottom 12 mm			
(Hull # HH-59/60)			

**ALL BARGES CAN BE FITTED WITH SPUD LEGS, SIDE WALLS, RAMP & MOORINGS BY REQUEST.**

P.O.Box: 302, Manama, Kingdom of Bahrain  
Tel. : 17 728837, Fax: 17 728217, C.R.: 16316  
E-mail : almelaha@ajscsco.com



RIMCO REGISTERED MEMBER  
Website : [www.ajscsco.com](http://www.ajscsco.com)

ص.ب: ٣٠٢ - المنامة - مملكة البحرين  
تليفون: ١٧ ٧٢٨٨٣٧ - فاكس: ١٧ ٧٢٨٢١٧ - سن.ت: ١٦٣١٦  
لبريد الالكتروني: [almelaha@ajscsco.com](mailto:almelaha@ajscsco.com)