

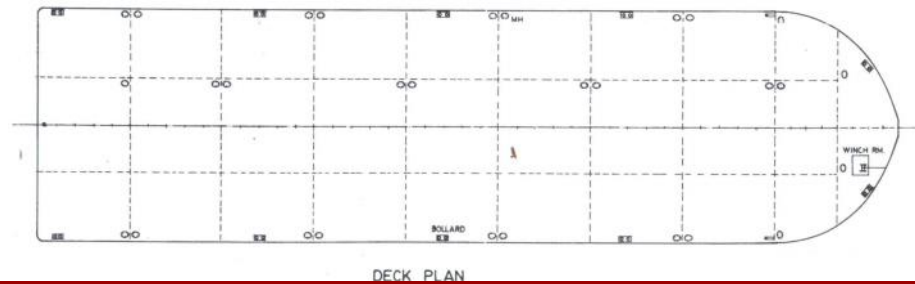
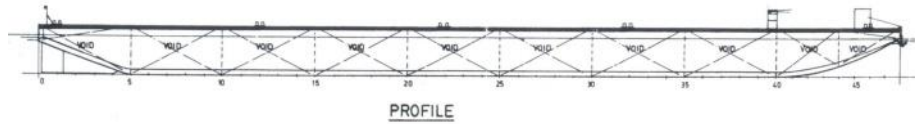


شركة الجزيرة للملاحة ذ.م.م
AL JAZEERA SHIPPING CO. W.L.L.



SPECIFICATION SHEET

BARGE NAME: GTO 280
TYPE OF BARGE: FLAT TOP



PRINCIPAL PARTICULARS

Built	1991
Builder	PT Pioneer Offshore, Singapore
Flag	Bahrain
Official No.	BN 3084
Class	ABS
Class No.	91165147
GRT	2436
NRT	731
Deadweight (T)	6503
Lightship (T)	1040
Displacement (T)	7543

PRINCIPAL DIMENSIONS

Length (m) LOA	85.34
Breadth (m)	22.86
Depth (m)	4.88
Max. Draft (m)	3.77

CARGO CAPACITIES

Deck Area approx. m ²	1700
Deck Strength T/m ²	7.5

DECK EQUIPMENT

Stockless Anchor	Y
Anchor Winch	Y
Smit Towing Brackets	Y
Mooring Bollards	Y

ALL BARGES CAN BE FITTED WITH SPUD LEGS, SIDE WALLS, RAMP & MOORINGS BY REQUEST.

P.O.Box: 302, Manama, Kingdom of Bahrain
Tel. : 17 728837, Fax: 17 728217, C.R.: 16316
E-mail : almelaha@ajscsco.com



BIMCO REGISTERED MEMBER
Website : www.ajscsco.com

ص.ب: ٣٠٢ - المنامة - مملكة البحرين
تليفون: ١٧ ٧٢٨٨٣٧ - فاكس: ١٧ ٧٢٨٢١٧ - ص.ب: ١٦٣١٦
البريد الإلكتروني: almelaha@ajscsco.com