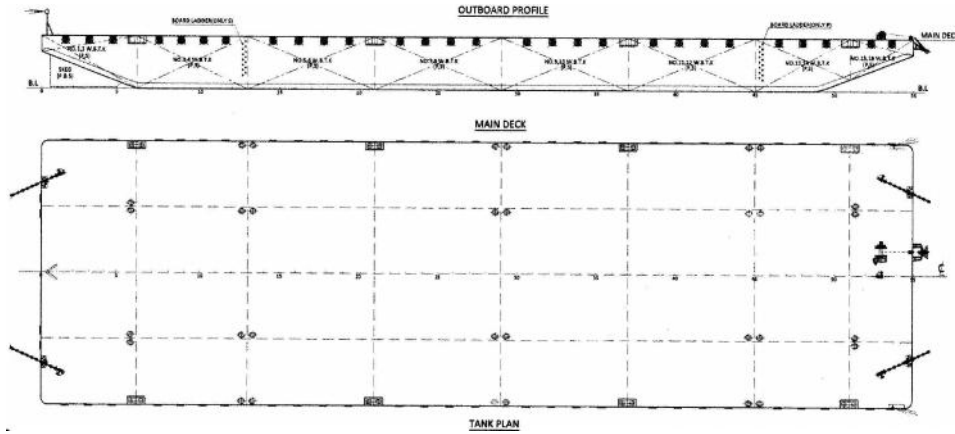




SPECIFICATION SHEET

BARGE NAME : GTO 332

TYPE OF BARGE :Deck Cargo and Ballast Tank



PRINCIPAL PARTICULARS

Built	2014 (ex Vallianz 332)
Builder	Nantong Chang Qingcha Shipyard, China
Hull number	DH14Q2002
Flag, Official No.	Bahrain, BN 7075
Class, Class ID	ABS, 15258341
GRT	4918
NRT	1475
Lightship	2444
Deadweight (T)	10333
Displacement (T)	12777

PRINCIPAL DIMENSIONS

Length (m) LOA/Reg.	100.58/96.588
Breadth (m)	30.48
Depth (m)	6.10
Max. Draft	4.50

CARGO CAPACITIES

Deck Area m ²	Approx. 2500
Deck Strength T/ m ²	25

ALL BARGES CAN BE FITTED WITH SPUD LEGS, SIDE WALLS, RAMP & MOORINGS BY REQUEST

