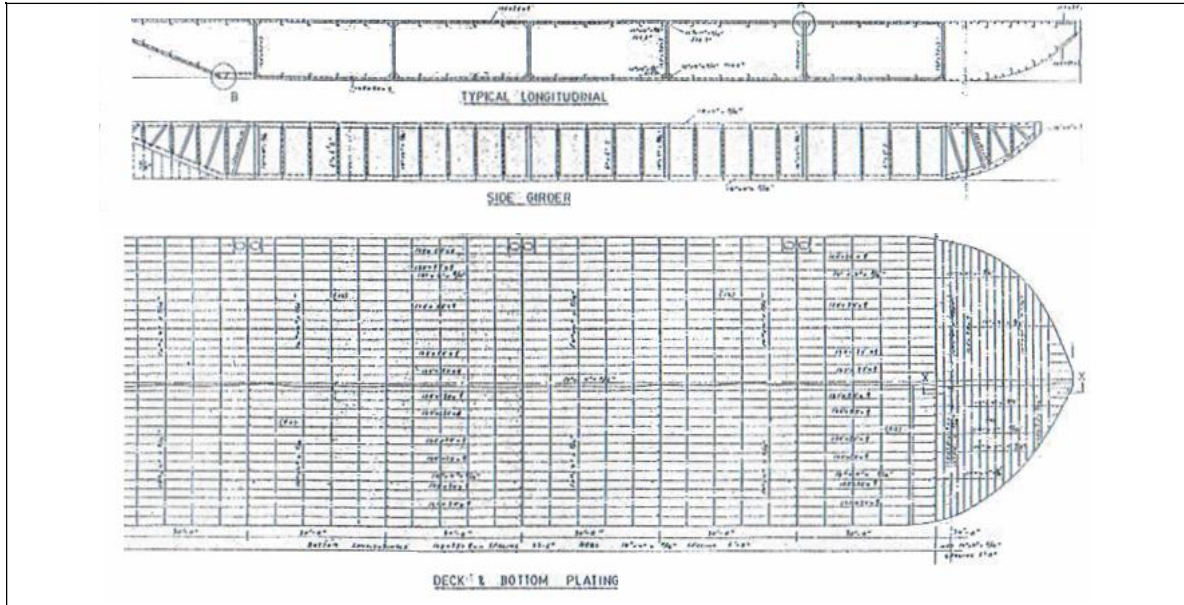




# SPECIFICATION SHEET

**BARGE NAME: GTO XXVII**  
**TYPE OF BARGE: FLAT (Spud) TOP**



## PRINCIPAL PARTICULARS

Built	1994
Builder	Grouping Shipbuilding, Singapore
Flag	Bahrain
Official No	BN 4011
Class	ABS
Class No	94165152
GRT	1053
NRT	316
Deadweight (t)	2856
Lightship (T)	430
Displacement (T)	3286

## PRINCIPAL DIMENSIONS

Length (m) Reg./LOA	61.45/64.02
Breadth (m)	18.29
Depth (m)	3.66
Max Draft (m)	3.05

## CARGO CAPACITIES

Deck Area (m <sup>2</sup> )	1000
Deck Strength (t/m <sup>2</sup> )	10
Outer Spuds	FWD+AFT Sb

**ALL BARGES CAN BE FITTED WITH SPUD LEGS, SIDE WALLS, RAMP AND MOORINGS BY REQUEST**

