



AL AALI 1

TOWING VESSEL



PRINCIPAL PARTICULARS

Built	2008
Builder	Fujian Shipyard, China
Flag	Bahrain
Class	ABS
Class No.	08186307
Official No.	BN6007
IMO No.	9522506
Call Sign	A9IX
GRT	446
NRT	133
Bollard Pull (T)	Approx. 63

MACHINERY

Main Engines	2x Caterpillar 3126B
Power	2x 2575 Bhp
Generators	Caterpillar 2x 245Kw Stamford 1x45Kw
Propellers	2x Kort Nozzle
Rudders	2
Oily Water Separator	Installed
Sewage Plant	Capacity 900L
Bow Thruster	180-200 Bhp

DECK EQUIPMENT

Towing Winch	Single Drum
Anchor Windlass	
Anchor (Stockless)	
Tow Hook	
Tagger Winch	
Grove Crane	
Accommodation Full AC	

PRINCIPAL DIMENSIONS

Length (m) LBP/LOA	13.60
Breadth (m)	4.06
Depth (m)	1.88
Max. Draft	0.75

CARGO CAPACITIES

Diesel Fuel Oil (Ltr.)	1296
Potable Water (Ltr.)	200

SPEED & CONSUMPTION

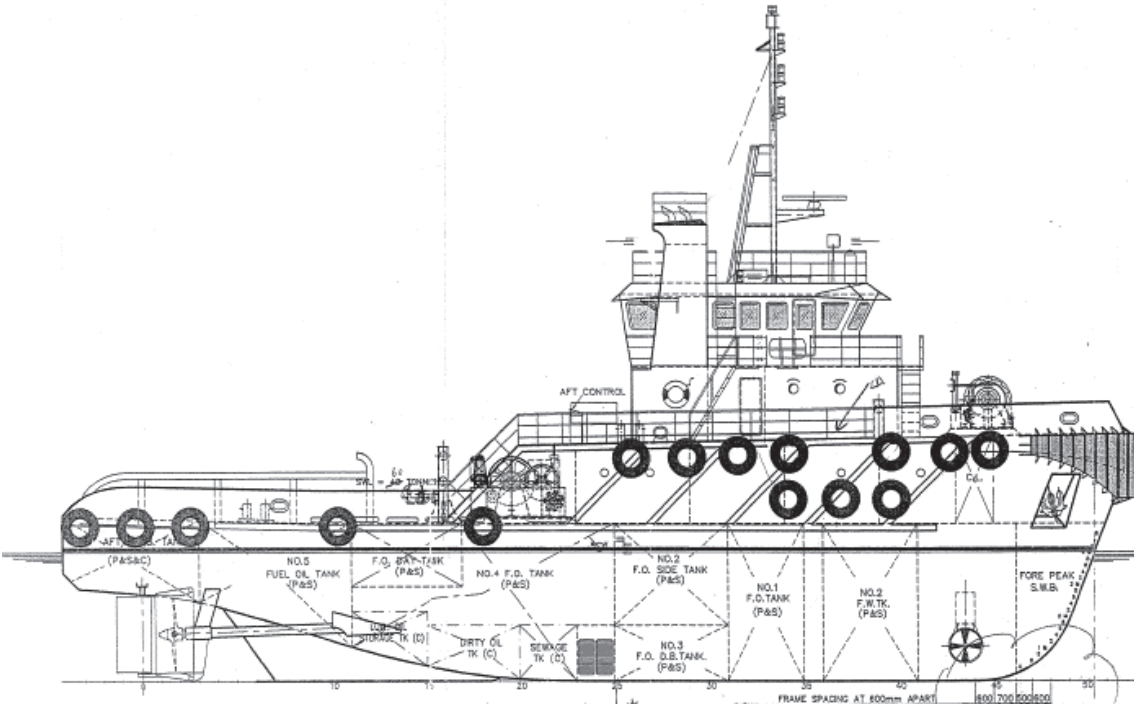
Max. Speed (Knots) Daily	25
Consumption (Ltrs/Day)	
Fuel Type	MDO

NAVIGATION EQUIPMENT

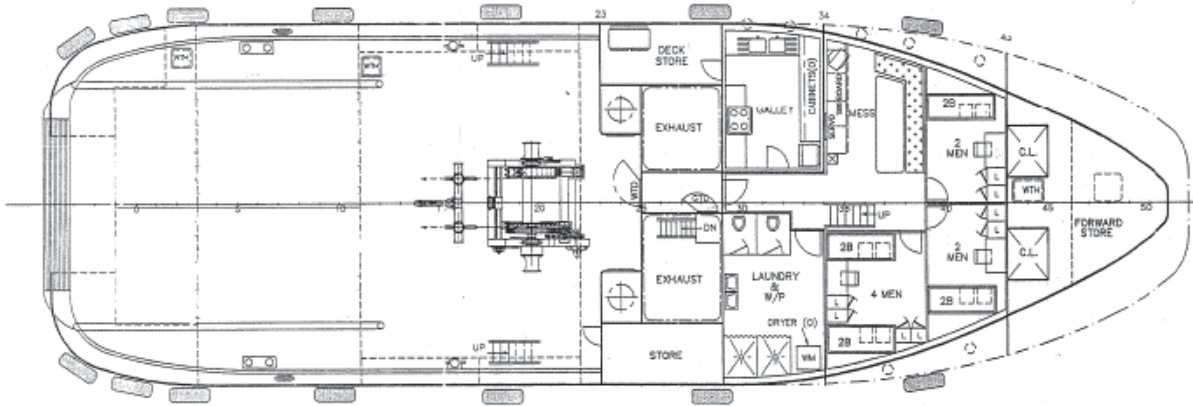
VHF No.1	ICOM ICM 304
VHF No.2	ICOM ICM 422
EPIRB	ACR RLB 32
GPS	Kodem KGP 913
Radar	Furuno 1623



GENERAL ARRANGEMENT PLAN - AL AALI 1



SIDE VIEW



TOP VIEW DECK LEVEL