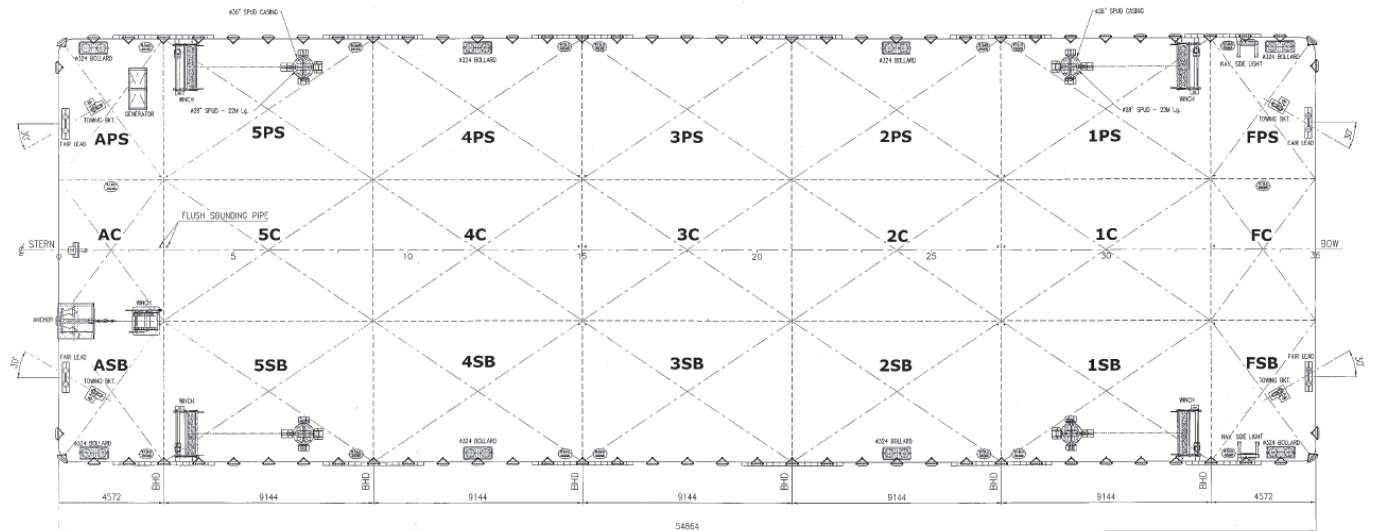
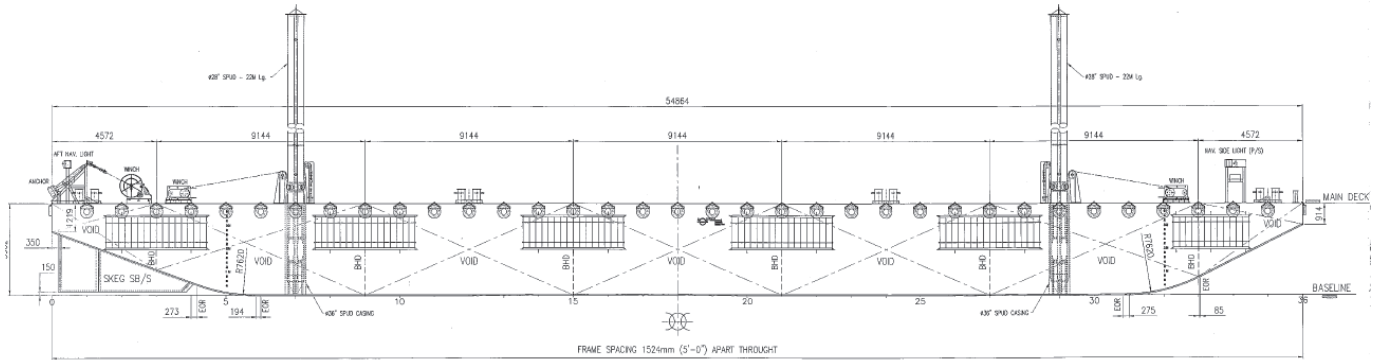




# GTO 1901

## BARGE: SPUD



### PRINCIPAL PARTICULARS

Built	2014
Builder	Nass Marine Services
Flag	Bahrain
Official No.	BN7049
Class	ABS
Class No.	14262043
GRT	979
NRT	293
Lightship (T)	N/A
Deadweight (T)	2390
Displacement (T)	294

### PRINCIPAL DIMENSIONS

Length (m) LOA	54.86
Breadth (m)	18.29
Depth (m)	3.96
Max. Draft	3.22

### CARGO CAPACITIES

Deck Area Approx. m <sup>2</sup>	900
Deck Strength T/m <sup>2</sup>	15

- Barge equipped with 2x spuds on Port and SB operated by individual winches

**ALL BARGES CAN BE FITTED WITH SPUD LEGS, SIDE WALLS, RAMP & MOORINGS BY REQUEST.**