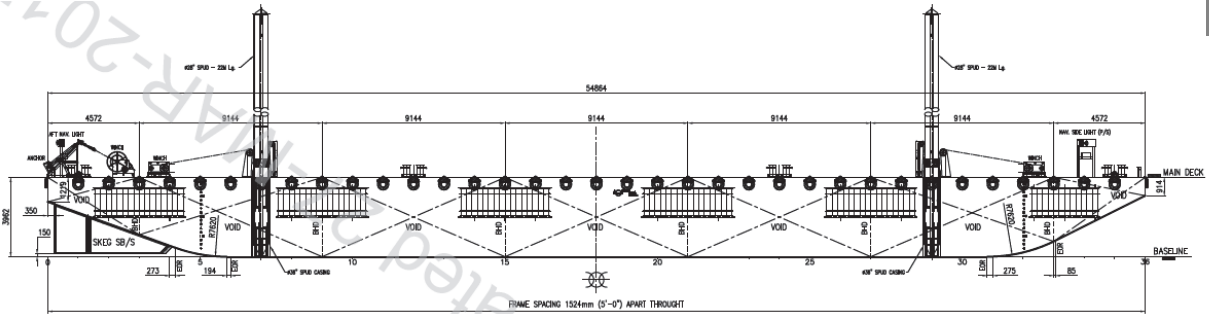


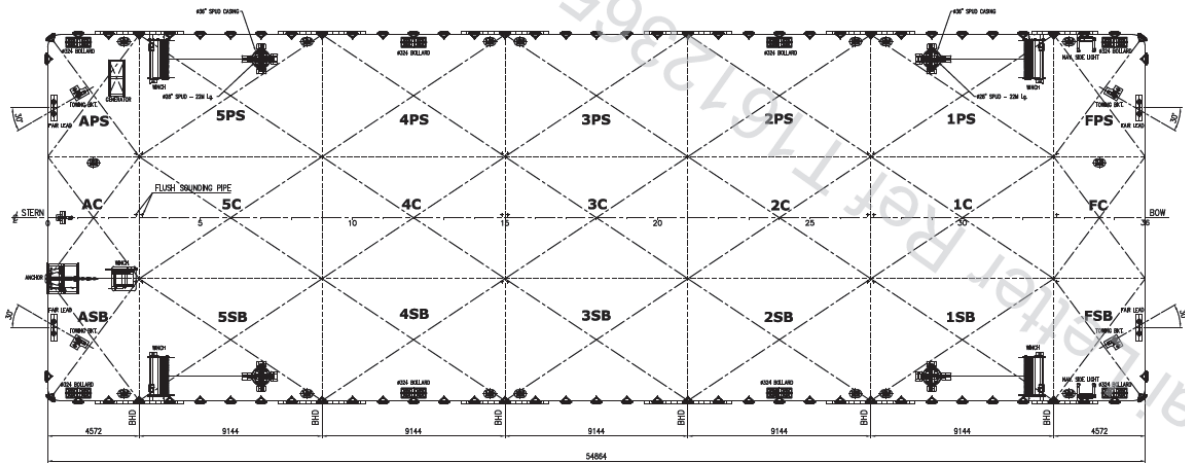


# GTO 1905

BARGE: SPUD



OUTBOARD PROFILE



MAIN DECK ARRANGEMENT PLAN

## PRINCIPAL PARTICULARS

Built	2017 (Hull #49)
Builder	Nass Marine Services, Bahrain
Flag	Bahrain
Official No.	BN8002
Class	ABS
Class No.	17271014
GRT	979
NRT	293
Lightship	541.5
Deadweight (T)	2398.8
Displacement (T)	2940.3

## PRINCIPAL DIMENSIONS

Length (m) LOA	54.86 / 52.67
Breadth (m)	18.29
Depth (m)	3.96
Max. Draft	3.22

## CARGO CAPACITIES

Deck Area Approx. m <sup>2</sup>	900
Deck Strength T/m <sup>2</sup>	15
2x Spud Fwd/Aft	4 + Winches

**ALL BARGES CAN BE FITTED WITH SPUD LEGS, SIDE WALLS, RAMP & MOORINGS BY REQUEST.**