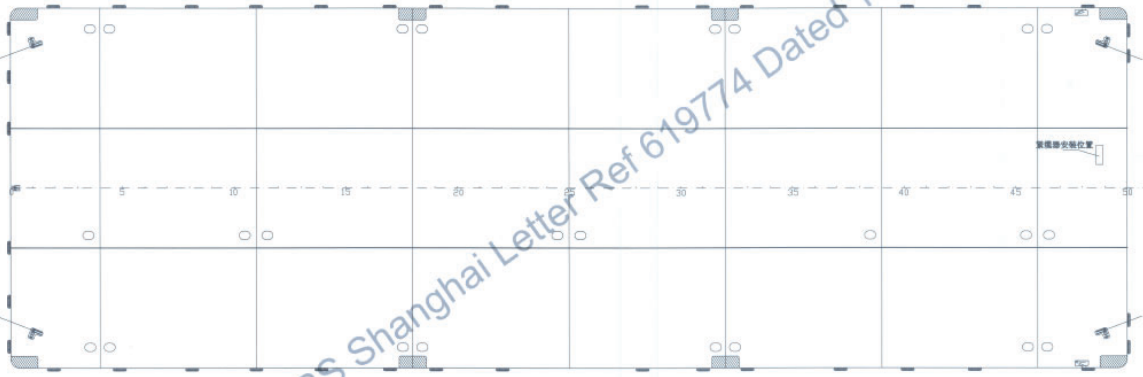
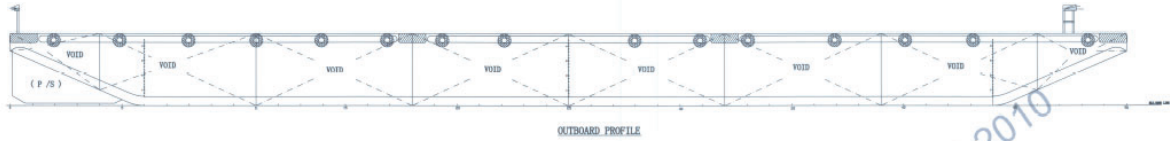




GTO 2507

BARGE:(BALLAST) FLAT TOP



ABS Shanghai Letter Ref 619774 Dated 19-AUG-2010

PRINCIPAL PARTICULARS

Built	2010
Builder	Nanjing Asiaprime Shipbuilding, China
Flag	Bahrain
Official No.	BN6043
Class	ABS
Class No.	10225564
GRT	2305
NRT	691
Deadweight (T)	4965.5
Displacement (T)	60.90.5

DECK EQUIPMENT

Stockless Anchor	Y
Anchor Winch	Y
Towing Brackets	Pull Force 80T
Mooring Bollards	Y
Navigation Lights	Y

PRINCIPAL DIMENSIONS

Length (m) LOA	76.20
Breadth (m)	24.38
Depth (m)	4.88
Max. Draft	3.62
Thickness: Deck	16mm
Sideshell	14mm
Bottom	12mm

(Hull # YH 10-07)

CARGO CAPACITIES

Deck Area Approx. m ²	1750
Deck Strength T/m ²	20
Tanks 1P/S to 8P/S Ballast able	
Total tank capacity : Approx 6800m ³	

ALL BARGES CAN BE FITTED WITH SPUD LEGS, SIDE WALLS, RAMP & MOORINGS BY REQUEST.