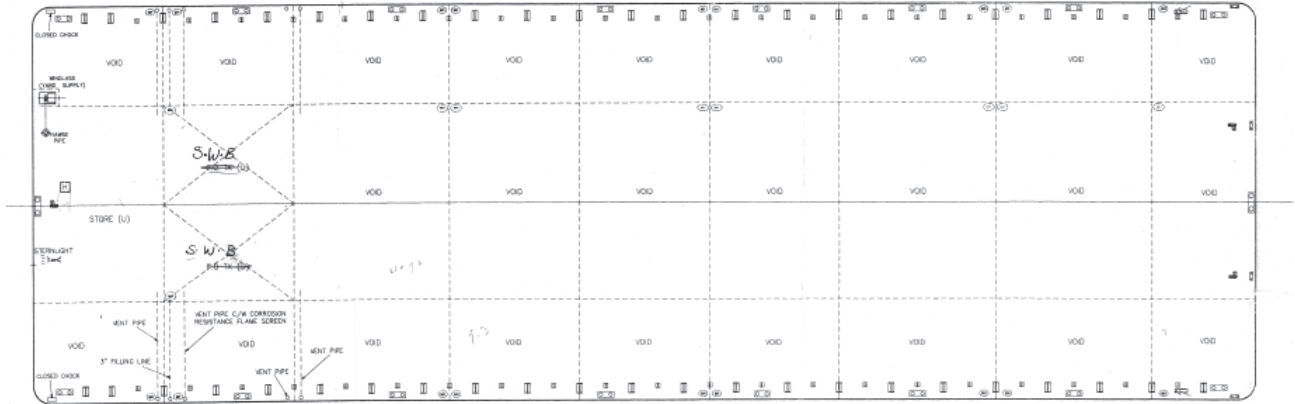
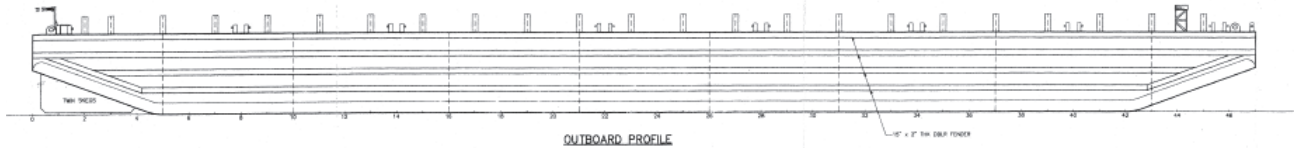




GTO 281

BARGE:FLAT TOP



PRINCIPAL PARTICULARS

Built	1997
Builder	Jiangdu Shipyard, China
Flag	Bahrain
Official No.	BN 5016
Class	ABS
Class No.	9734845
GRT	3385
NRT	1015
Deadweight (T)	7938
Lightship (T)	1692
Displacement (T)	9630

PRINCIPAL DIMENSIONS

Length (m) LOA	86.00
Breadth (m)	27.50
Depth (m)	5.50
Max. Draft	4.38

CARGO CAPACITIES

Deck Area Approx. m ²	2100
Deck Strength T/m ²	10

DECK EQUIPMENT

Stockless Anchor	Y
Anchor Winch	Y
Smit	Y
Towing Brackets	Y
Mooring Bollards	Y

ALL BARGES CAN BE FITTED WITH SPUD LEGS, SIDE WALLS, RAMP & MOORINGS BY REQUEST.