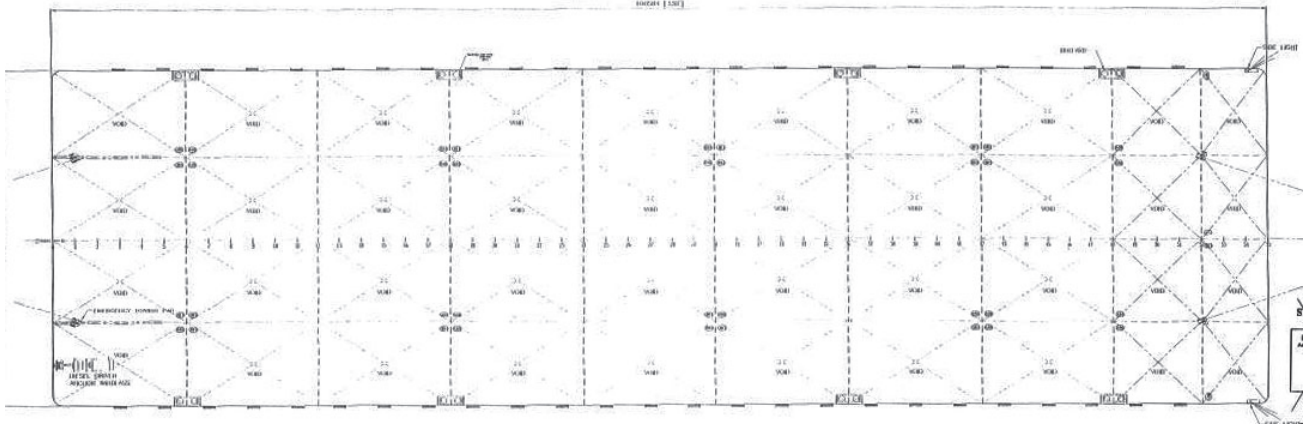
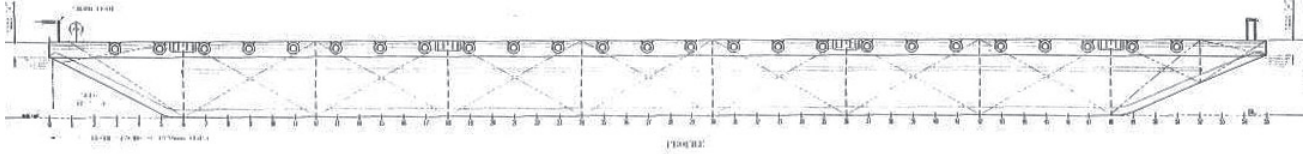




# GTO 393

## BARGE: DECK GARGO



### PRINCIPAL PARTICULARS

Built	2006
Builder	Nanjing Haiyue Shipping Making, China
Flag	Bahrain
Official No.	BN5004
Class	ABS
Class No.	YY179869
GRT	4370
NRT	1311
Deadweight (T)	10284
Lightship (T)	1956
Displacement (T)	12240

### PRINCIPAL DIMENSIONS

Length (m) LOA	100.58
Breadth (m)	27.43
Depth (m)	6.10
Max. Draft	4.80

### CARGO CAPACITIES

Deck Area Approx. m <sup>2</sup>	2500
Deck Strength T/m <sup>2</sup>	15

**ALL BARGES CAN BE FITTED WITH SPUD LEGS, SIDE WALLS, RAMP & MOORINGS BY REQUEST.**