



PRINCIPAL PARTICULARS

Built	1993
Builder	Port Repair & Marine Supply. Malaysia
Flag	Bahrain
Official No.	BN5031
Class	ABS
Class No.	9301780
GRT	426
NRT	199
Deadweight (T)	952
Lightship (T)	210
Displacement (T)	1162
Deck Strength T/m ²	4
Length (m) LOA	39.99
Bread (m)	13.00
Depth (m)	3.00
Max. Draft	2.38

MACHINERY

Generators	Caterpillar 3406B
Cargo Pump	200m ³ /hr.
Stripping Pump	50m ³ /hr.

DECK EQUIPMENT

Winch (Electric)	FWD P
Davit FWD & AFT (T)	0.6
Crane (Favelle Favco)	25RL
Max. Axial Load (T)	10.6
Max. Overturn Moment (T)	48

DECK HOUSE

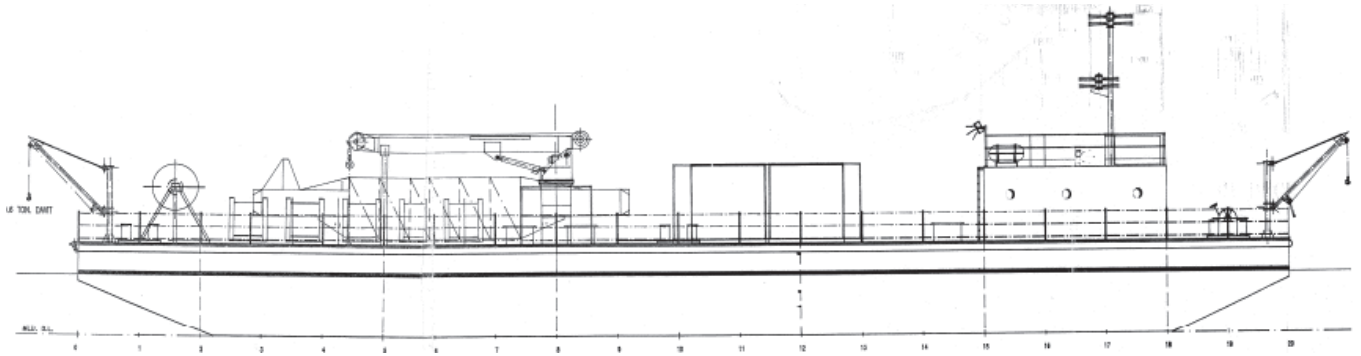
Pump Room	Yes
Office	Yes
Rest Room	Yes
Toilets/Shower	Yes

CARGO CAPACITIES

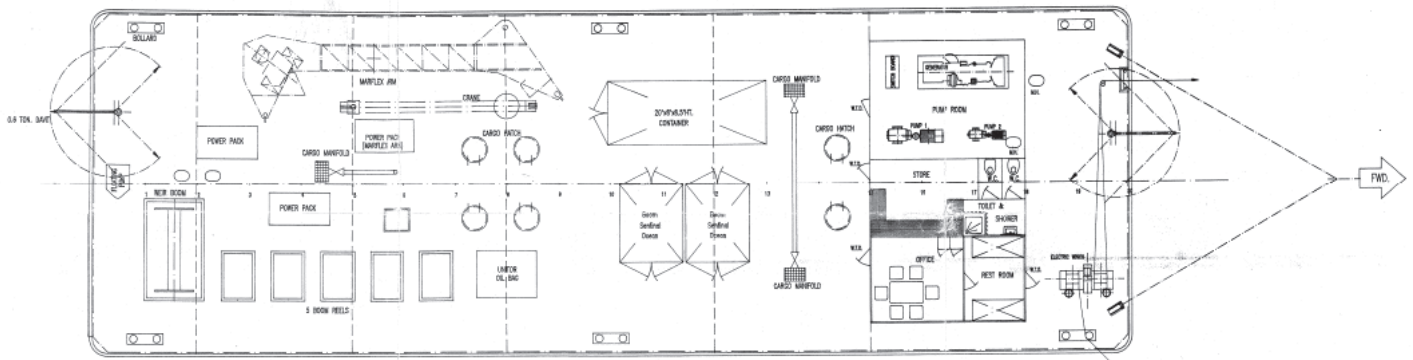
Diesel Fuel Oil (T) 6Tks	760
Potable Water (T)	0.8
Void Tanks	8



GENERAL ARRANGEMENT PLAN - GTO 50



SIDE VIEW



TOP VIEW DECK LEVEL