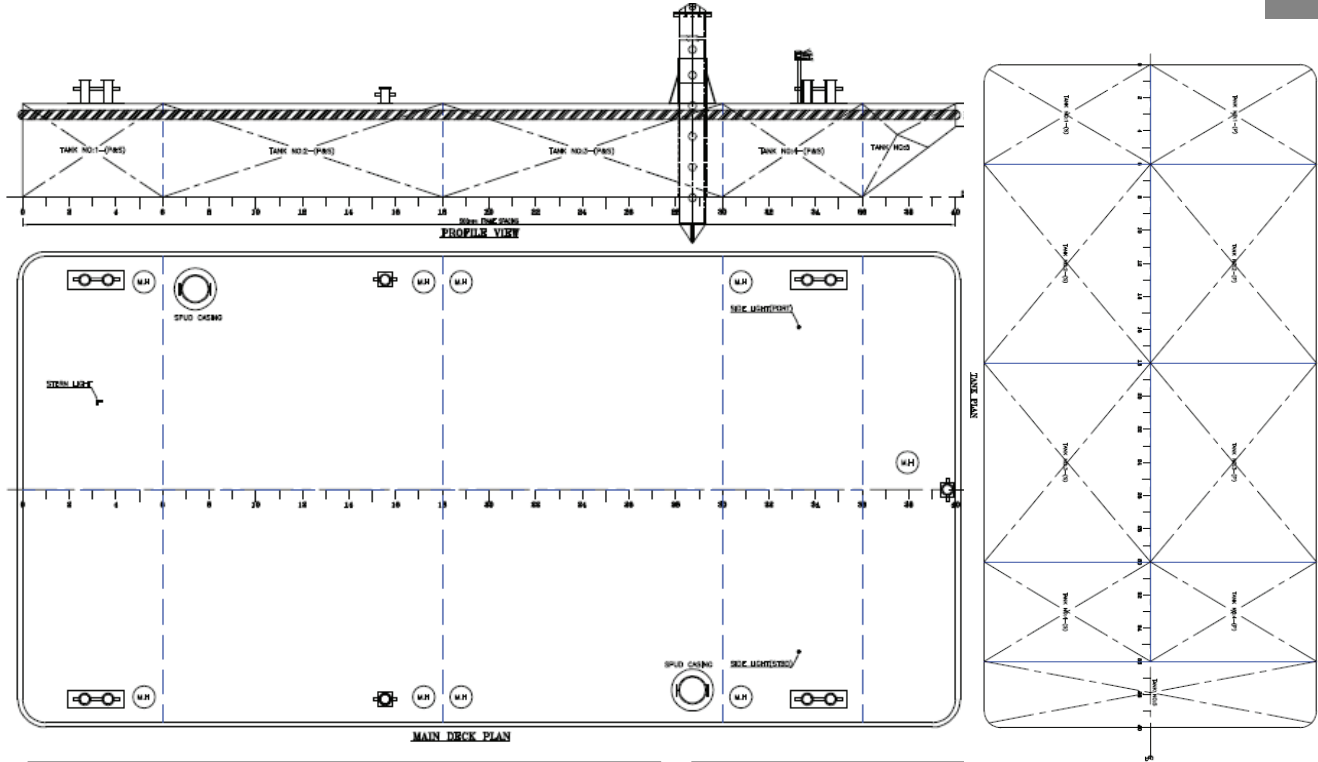




GTO II

BARGE: PONTOON



PRINCIPAL PARTICULARS

Built	1980
Builder	Damman, Saudi Arabia
Flag	Bahrain
Official No.	BN6583
GRT	68.52
Deadweight (T)	65

PRINCIPAL DIMENSIONS

Length (m)	12.19
Breadth (m)	9.14
Depth (m)	1.22
Max. Draft	0.82

CARGO CAPACITIES

Deck Area Approx. m ²	80
Deck Strength T/m ²	2
No of Tanks	12

ALL BARGES CAN BE FITTED WITH SPUD LEGS, SIDE WALLS, RAMP & MOORINGS BY REQUEST.