



PRINCIPAL PARTICULARS

Built	1989
Builder	Southern Ocean Shipbuilding, Singapore
Flag	Bahrain
Official No.	ABS
Class	8900252
Class No.	BN3087
GRT	1133
NRT	844
Deadweight (T)	2528
Lightship (T)	596
Desplacement (T)	3124
Accommodation	4 Persons

DECK EQUIPMENT

Hoses	2x 60'6 - 2x 60'4
Anchor Windlass	1x Ustein Brattvaag 13.4t @14.2m/min
Anchors	2x 1050Kg / 38mm Stockless

MACHINERY

Cargo Pump Engines	2x Perkins-126.9Hp @ 1800RPM 2x Perkins-58.6Hp @ 1800RMP
Generators	1x Stamford-GM 4V71 20Kw, 415V, 50Hz, 3Ph

PRINCIPAL DIMENSIONS

Length (m) LOA	64.01
Breadth (m)	18.29
Depth (m)	3.66
Max. Draft	2.93

CARGO CAPACITIES

Fuel Oil (m ³)	3025
Fresh Water (T)	30
No. of Tanks	12x Fuel Oil & 4x Ballast Tanks

DISCHARGE RATES

Cargo Pumps	2x Blackmer-8" 260m ³ /hr @ 100 Psi 2x Blackmer-4" 110m ³ /hr @ 100 Psi
Fire Fighting Pump	1x HICO 95m ³ /hr @ 50m Head
Fuel Transfer Pump	1x Blackmer 10 USG/min @ 50 Psi
FW Transfer Pump	1x ESPA 50 litres/min @ 8m Head
SW Transfer Pump	1x ESPA 50 litres/min @ 8m Head
Bilge Pump	1x NIKKISO 50 litres/min @ 8m Head

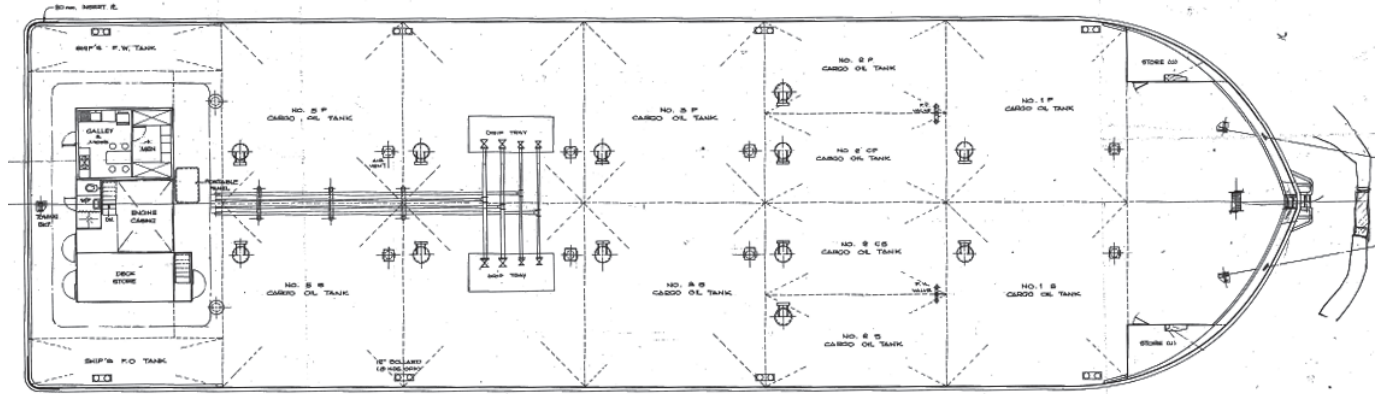
NAVIGATION EQUIPMENT

VHF Radio	1x JRC
-----------	--------

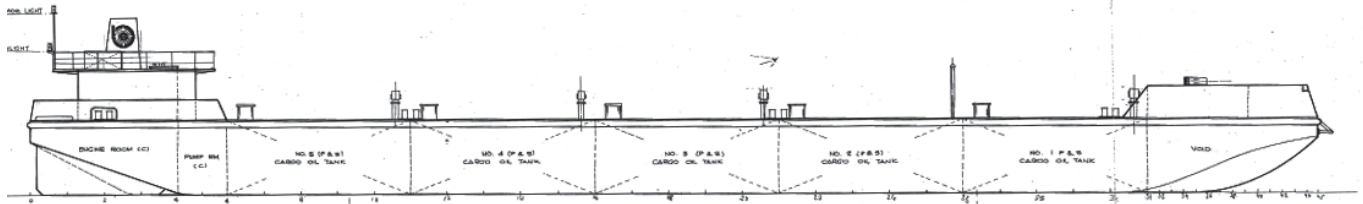
ALL BARGES CAN BE FITTED WITH SPUD LEGS, SIDE WALLS, RAMP & MOORINGS BY REQUEST.



GENERAL ARRANGEMENT PLAN - TITAN



SIDE VIEW DECK LEVEL



TOP VIEW DECK LEVEL