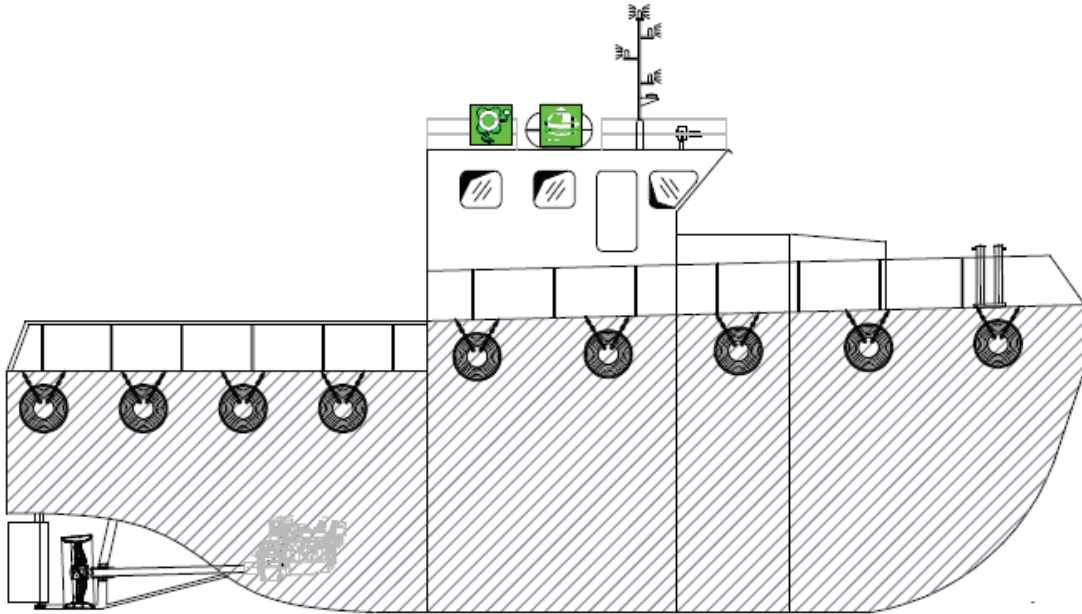




# DONA IX

## SMALL TUG



### PRINCIPAL PARTICULARS

Built	1974
Builder	UK
Flag	Bahrain
Official No.	BN7134
Call Sign	A9D2791
GRT	38
NRT	30

### MACHINERY

Main Engines	2x GM in line 6 Cylinder
Power	730 hp @ 1800 rpm
Generators	1x FG Wilson
Propelles	1
Rudders	1

### DECK EQUIPMENT

Tow Rope	1x 3" Polypropylene
----------	---------------------

### PRINCIPAL DIMENSIONS

Length(m)	12.95
Breadth (m)	5.18
Depth (m)	3.50
Max. Draft (m)	2.80

### CARGO CAPACITIES

Fuel Oil (m <sup>3</sup> )	3.50
Potable Water (m <sup>3</sup> )	6.75

### SPEED & CONSUMPTION

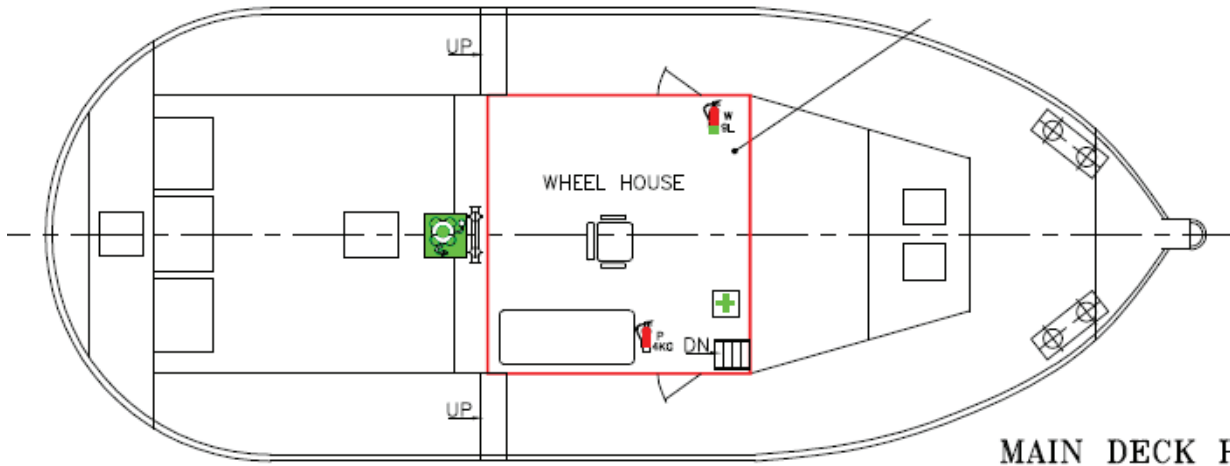
Max. Speed (Knots)	9
Daily Consumption (T)	max. 2.0
Economical Speed (knots)	8
Fuel Type	MGO

### NAVIGATION EQUIPMENT

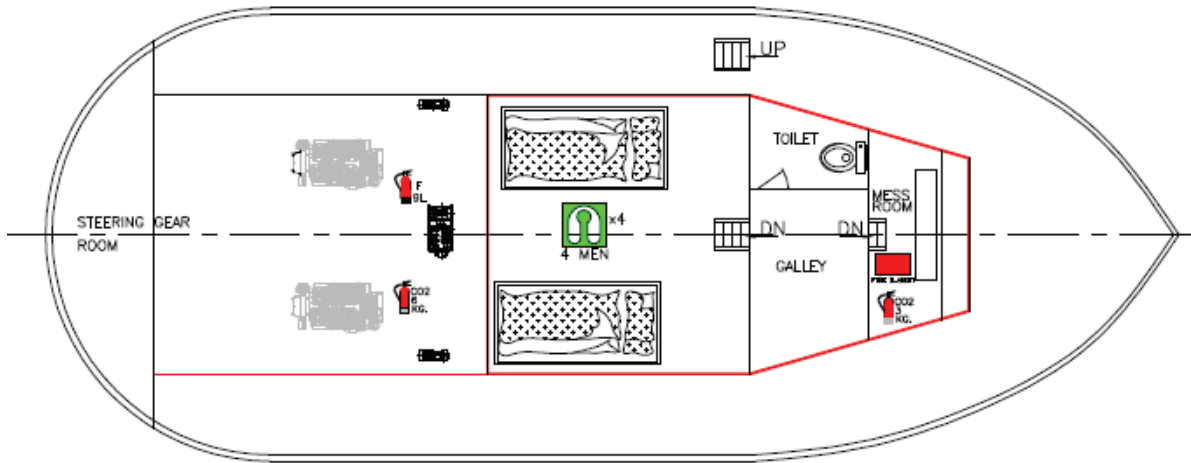
GPS	Koden
Radar	Ratnarube
Radio	Sailor



### GENERAL ARRANGEMENT PLAN - DONA IX



MAIN DECK PLAN



BELLOW DECK PLAN

### TOP VIEW DECK LEVEL / BELLOW DECK PLAN