



# SEA GRANDEUR

## TOWING TUG



### PRINCIPAL PARTICULARS

Built	2005
Builder	Sibu, Malaysia
Flag	Bahrain
Class	DNVGL
Class No.	111943
Official No.	BN 4083
IMO No.	9373096
Call Sign	A9D2892
GRT	179
NRT	54
Bollard Pull (t)	Approx. 20T

### MACHINERY

Main Engines	2 x Caterpillar
Power	2 x 848 hp
Generators	2 x Mitsubishi S4K-T
Propellers	2 x Kort Nozzles
Rudders	2

### DECK EQUIPMENT

Anchor Windlass	1.5T
Anchors	2 x Stockless (420 Kg)
Tow Hook	1 x 20T
Accommodation	10 prs.

### PRINCIPAL DIMENSIONS

Length (m) LBP/LOA	23.02
Breadth (m)	8.10
Depth (m)	3.60
Max. Draft	3.01

### CARGO CAPACITIES

Fuel Oil (T)	120
Potable Water (T)	30
Dirty Oil Tank (T)	Y
Lub Oil Tank	Y

### SPEED & CONSUMPTION

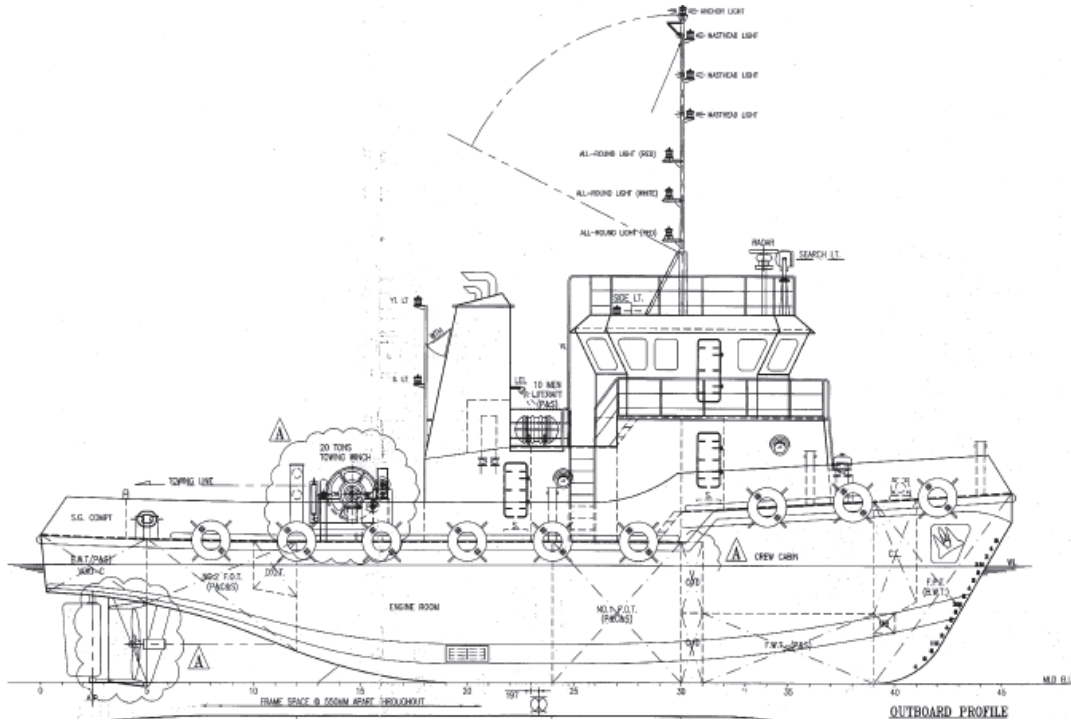
Max. Speed (Knots) Daily	11
Consumption (T)	3.0
Fuel Type	MDO

### NAVIGATION EQUIPMENT

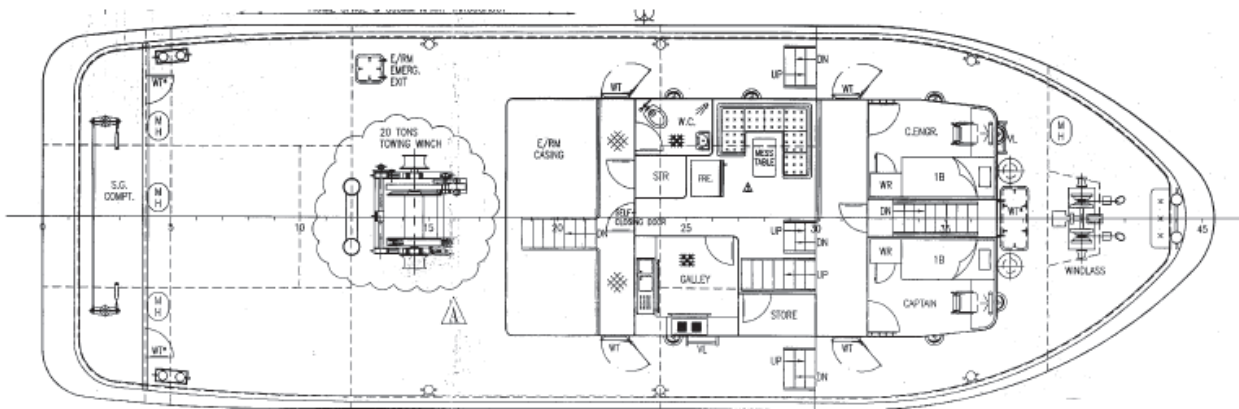
GPS	Furuno Nav. GP-32
Radar	Furuno 1721 MKII
Echo Sounder	Furuno FCV-667
VHF Radio	Icom IC-M45
SSB Radio	Icom IC-M710
Magnet Compass	Daiko T150B/7800 Fx4



## GENERAL ARRANGEMENT PLAN - SEA GRANDEUR



**SIDE VIEW**



**TOP VIEW DECK LEVEL**