



SEA SCORPION

TOWING TUG



PRINCIPAL PARTICULARS

| | |
|------------------|-----------------------------------|
| Built | 2007/2008 (#CEL0607-P189) |
| Builder | Celtug Service Shipyard, Malaysia |
| Flag | Bahrain |
| Class | BV |
| Class No. | BV 11878N |
| Official No. | BN 7066 |
| IMO No. | 9510498 |
| Call Sign | A9LB |
| GRT | 460 |
| NRT | 138 |
| Bollard Pull (T) | 45 |
| Accom Full AC | 15 Prs |

MACHINERY

| | |
|------------------|----------------------|
| Main Engines | 2x Niigata 6MG25HX |
| Power | 2x 1800 hp @ 750 rmp |
| Generators | 2x Cummins 150 Kw |
| Propellers | 2x Solid Screw |
| Rudders | 2 |
| Bow Thruster+Ind | Kamome 250 Bhp |

DECK EQUIPMENT

| | |
|------------------------|----------------------------|
| Tow Winch | Brake Holding 100 T |
| Towing Wire | 50mm x 700m |
| Main Anchor | 2x 660 Kg |
| Anchor Windlass | Hydraulic 4/6T |
| Towing Hook | 40T SWL |
| Tugger Winch | 2x SWL 20T |
| Deck Creane Grove | M977 8.2T@1m 1.5T@6m |
| Sewage Treatment Plant | E/R 1.5m ³ /day |
| Oily/Water Separator | 0.5m ³ /Hr. |

SURVIVAL & FIRE FIGHTING EQUIPMENT

| | |
|--------------|----------------------------------|
| Life Rafts | 2x25 Prs PS+ SB |
| Life Jackets | 20 |
| Fi-Fi System | 2x 150m ³ /hr monitor |

S & FF in compliance with Flag Administration and Class Regulations

PRINCIPAL DIMENSIONS

| | |
|--------------------|---------------|
| Length (m) LBP/LOA | 32.76 / 36.00 |
| Breadth (m) | 10.40 |
| Depth (m) | 5.00 |
| Max. Draft | 4.00 |

CARGO CAPACITIES

| | |
|------------------------------------|------|
| Fuel Oil (m ³) Potable | 350 |
| Water (m ³) | 100 |
| Ballast (m ³) | 4.30 |
| Lub. Oil Tank | 3.60 |

SPEED & CONSUMPTION

| | |
|-----------------------|------|
| Max. Speed (Knots) | 12.5 |
| Daily Consumption (T) | 6.0 |
| Fuel Type | MDO |

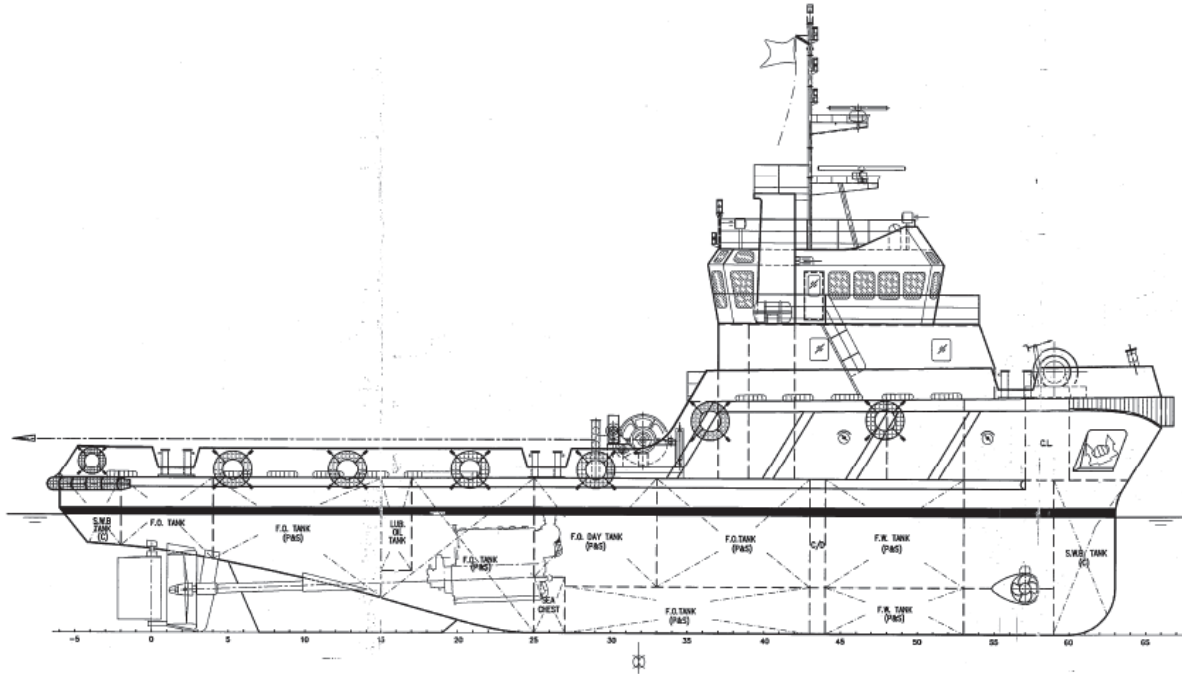
NAVIGATION EQUIPMENT

| | |
|--------------------|----------------------------------|
| EPIRB | Compass(Gyro)-Furuno |
| SART | Compass(Magn)-Daiko |
| VHF Radio | 3x BNWAS-SCR NB100 |
| GMDDSS | Intercom to ESP |
| 2 Way VHF | 3x Sets Auto Pilot - Simrad AP35 |
| SSB-Furuno F5-1570 | Inmarsat-Furuno Felcom |
| SSB | 2x Radars-Furuno |
| GPS-Furuno GP150 | Navtex-Furuno NX700B |
| AIS-Furuno Fa-1502 | Echo Sounder-Furuno |
| FWD & AFT Control | |

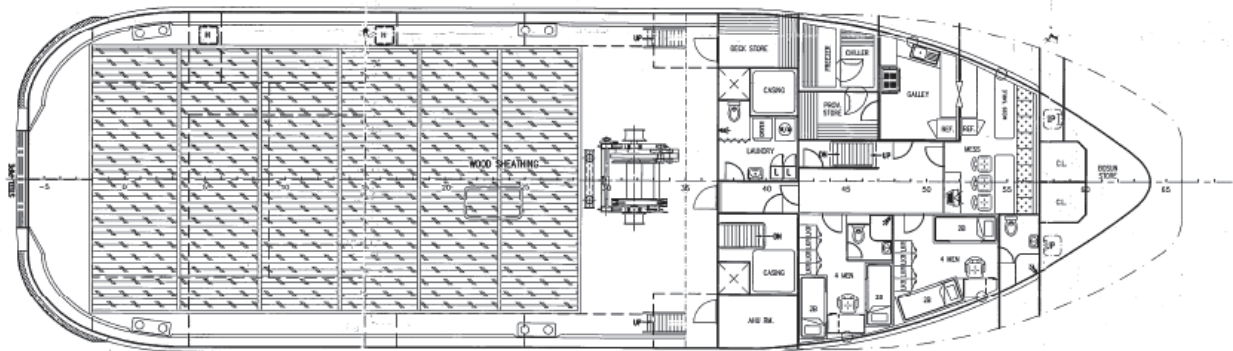
NavEQ in compliance with Flag Administration and Class Regulations



GENERAL ARRANGEMENT PLAN - SEA SCORPION



SIDE VIEW



TOP VIEW DECK LEVEL