



SEA SURVEYOR

TOWING TUG



PRINCIPAL PARTICULARS

Built	1972
Builder	Akerboom Leiden, NL Hull 180
Flag	Bahrain
Class	DNVGL
Class No.	37314
Official No.	BH12735
IMO No.	N/A
Call Sign	A9D3362
GRT	36
NRT	14
Lightship (T)	31.05

MACHINERY

Main Engines	GM V871
Power	240 Bhp
Generator	2x Perkins P18E2 13Kva,230V,1500 rpm
Propellers	1
Rudders	1

DECK EQUIPMENT

Anchors	Manual
---------	--------

SURVIVAL EQUIPMENT

Life Raft	1 of 6 Prs.
Life Buoys	6 Sets
Pyrotechnics	Various
Fire Extinguishers	9 Sets

PRINCIPAL DIMENSIONS

Length (m) LBP/LOA	16.95/ 15.35
Breadth (m)	4.25
Depth (m)	2.46
Max. Draft	1.53

CARGO CAPACITIES

Fuel Oil (m ³)	3.64
Potable Water (m ³)	0.75

SPEED & CONSUMPTION

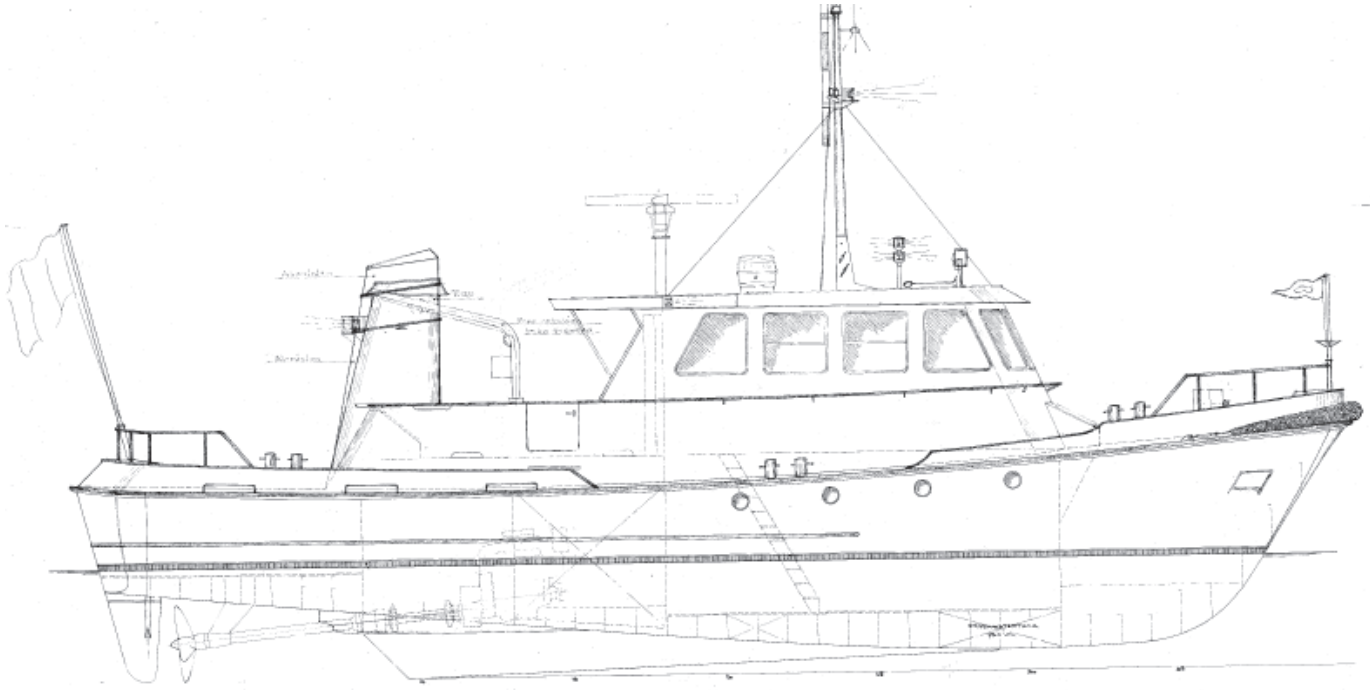
Max. Speed (Knots)	Approx. 8
Daily Consumption (T)	Approx. 1.5
Fuel Type	MGO

NAVIGATION EQUIPMENT

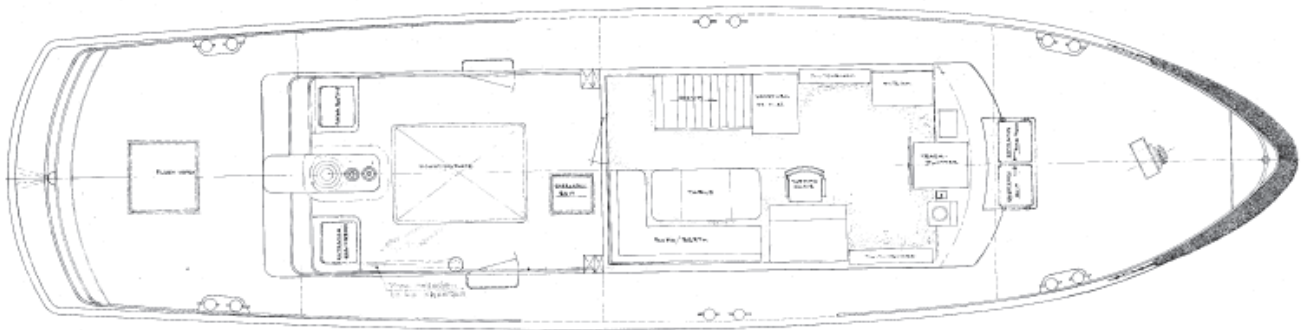
EPIRB	McMurdo
SART	Samyung
VHF Radio	2x Sailor
Marine Radar	Raytheon
GPS	Koden
Echo Sounder	Garmin
Navtex Receiver	Furuno
Flx Fire Ext. System	CO2 1x 45Kg
EEBD	2 Sets



GENERAL ARRANGEMENT PLAN - SEA SURVEYOR



SIDE VIEW



TOP VIEW DECK LEVEL