



# SEA WORKER

## MULTICAT/CRANE BARGE (SP)



### PRINCIPAL PARTICULARS

|              |  |
|--------------|--|
| Built        | 1978   |
| Builder      | Scheepswerf Lanser BV<br>Sliedrecht, Netherlands |
| Flag         | Bahrain  |
| Class        | BV   |
| Class no.    | 80J278   |
| Official no. | BH6240   |
| IMO no.      | 8977912  |
| Call Sign    | A9D3104  |
| GRT          | 122  |
| NRT          | 36   |

### MACHINERY

|                  |                        |
|------------------|------------------------|
| Main Engines     | 2x Caterpillar 3406 TA |
| Power            | 2x 270hp @ 1800 rpm    |
| Main Generator   | Caterpillar 3306       |
| Second Generator | Perkins P65E3          |
| Both Generators  | 140 Kva - 380V - 50Hz  |
| Propellers       | 2x BM                  |
| Rudders          | 2x                     |

### DECK EQUIPMENT

|                 |                      |
|-----------------|----------------------|
| Anchor Winch    | Y                    |
| Anchors         | 1x                   |
| Winch           | 60 T                 |
| Crane Main Deck | Effer 110TxM >20<50T |
| Crew            | 2                    |

### SURVIVAL EQUIPMENT

2x 6 Men Liferaft 9x Life Jackets

### PRINCIPAL DIMENSIONS

|                    |             |
|--------------------|-------------|
| Length (m) LOA/LBP | 24.18/23.00 |
| Breadth (m)        | 11.00       |
| Depth (m)          | 2.80        |
| Max. Draft         | 1.78        |

### CARGO CAPACITIES

|                     |    |
|---------------------|----|
| Diesel Fuel Oil (T) | 15 |
| Potable Water (T)   | 40 |
| Ballast (T)         |    |
| Lub Oil Tank (T)    |    |

### SPEED & CONSUMPTION

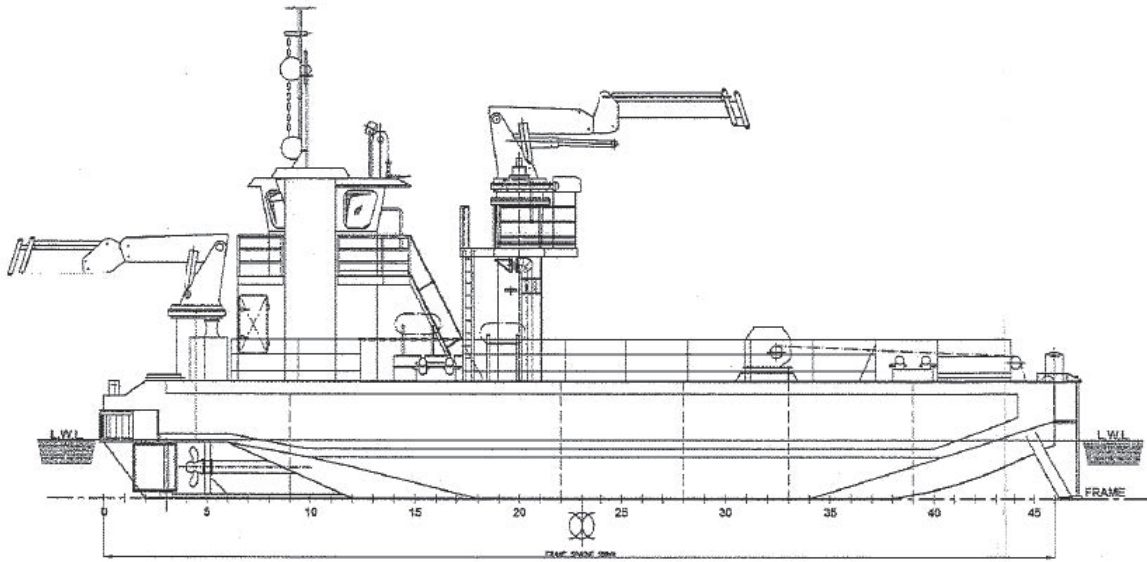
|                       |     |
|-----------------------|-----|
| Max. Speed (Knots)    |     |
| Daily Consumption (T) | 1.0 |
| Fuel Type             | MDO |

### NAVIGATION EQUIPMENT

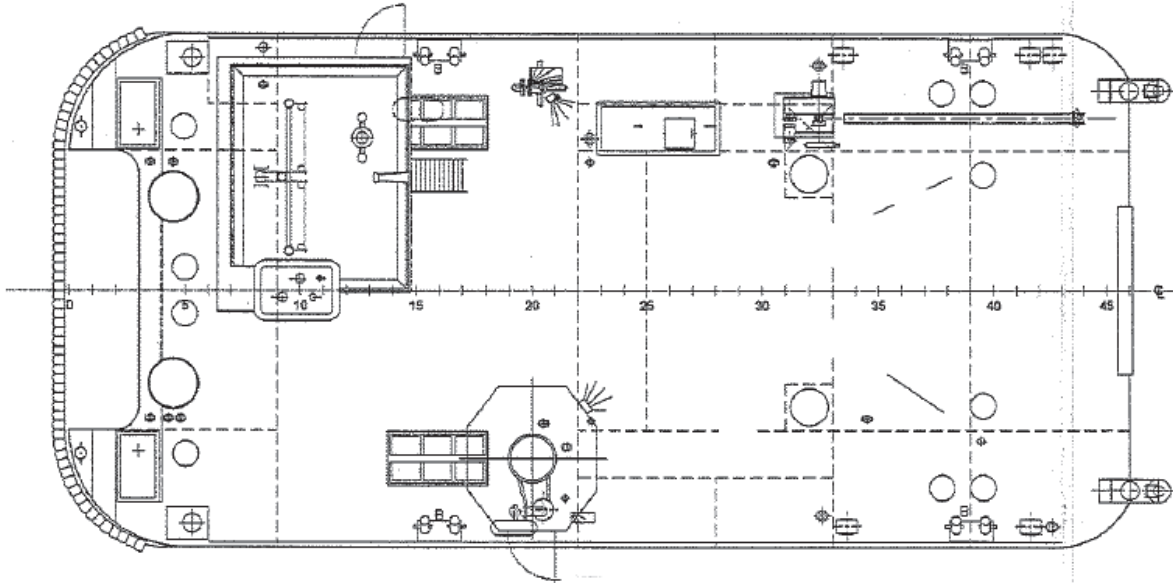
|               |                    |
|---------------|--------------------|
| Inmarsat C    |                    |
| SSB           |                    |
| VHF Radio     | Sailor RT 5022     |
| Radar         | Furuno RDP-150     |
| EPIRB 406 Mhz | Tron 30SMK II      |
| Echo Sounder  | Koden CVS118 MKII  |
| GPS           | Furuno Nav. GP 150 |
| NAVTEX        | Furuno NX-500      |
| Radio         | Sailor RT5022      |
| GMDSS         | Simrad & SRH50     |
| SART          | Jotron             |
| Compass       | Observator MK3     |



## GENERAL ARRANGEMENT PLAN - SEA WORKER



**SIDE VIEW**



**TOP VIEW DECK LEVEL**