



GTO 1204

BARGE: SPUD DECK CARGO



PRINCIPAL PARTICULARS

Built	2009
Builder	PT Natwell Shipyard Indonesia
Flag	Bahrain
Official No.	BN 5082
Class	BV
Class No.	17672L
GRT	259
NRT	78
Lightship (T)	145.9
Deadweight (T)	627.1
Displacement (T)	773

PRINCIPAL DIMENSIONS

Length (m) LOA	36.58
Breadth (m)	12.19
Depth (m)	2.44
Max. Draft (m)	1.87

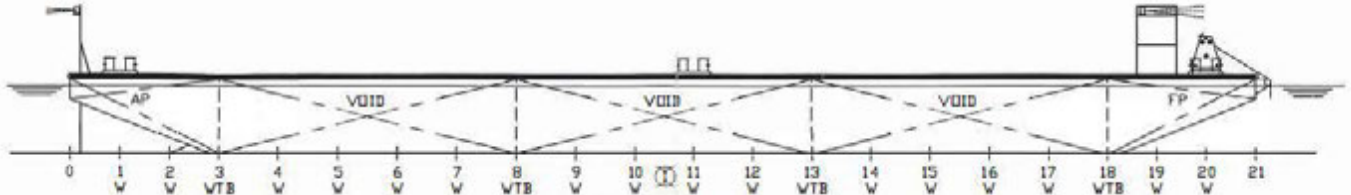
CARGO CAPACITIES

Deck Area (m ²)	628
Deck Strength (t/m ²)	10

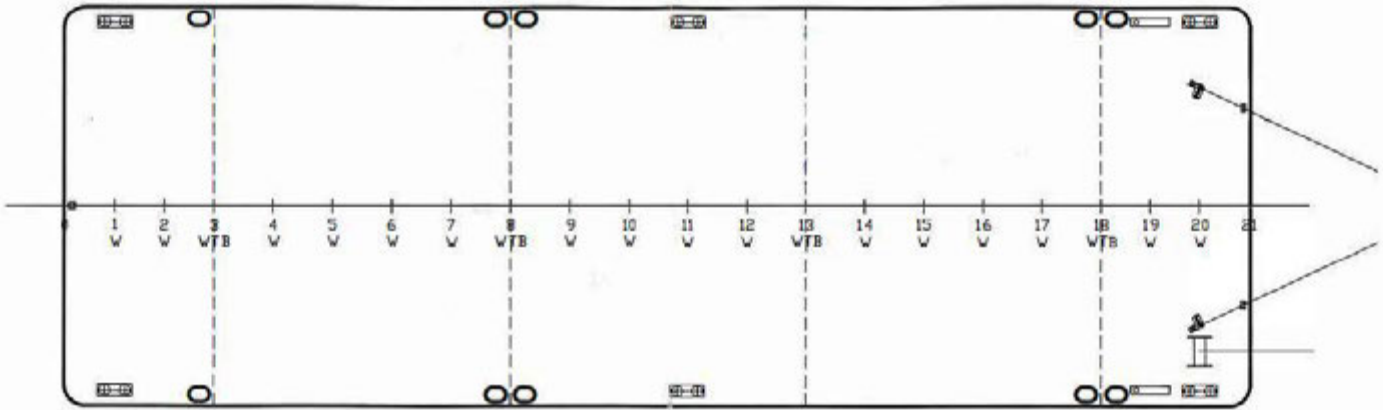
BARGES CAN BE FITTED WITH SPUD LEGS, SIDE WALLS, RAMP & MOORINGS BY REQUEST.



GENERAL ARRANGEMENT PLAN - GTO 1204



SIDE VIEW



TOP VIEW DECK LEVEL