



# GTO 152

**BARGE: FLAT TOP**



## PRINCIPAL PARTICULARS

|                  |  |
|------------------|--|
| Built            | 2007                                   |
| Builder          | Nanjing Haiyue Shipping Making Co. Ltd |
| Flag             | Bahrain                                |
| Official No.     | BN5015                                 |
| Class            | Bureau Veritas                         |
| Class No.        | 12241H                                 |
| GRT              | 514                                    |
| NRT              | 154                                    |
| Deadweight (T)   | 1231                                   |
| Lightship (T)    | 301                                    |
| Displacement (T) | 1532                                   |

## PRINCIPAL DIMENSIONS

|                |       |
|----------------|-------|
| Length (m) LOA | 45.72 |
| Breadth (m)    | 15.24 |
| Depth (m)      | 3.05  |
| Max. Draft (m) | 2.40  |

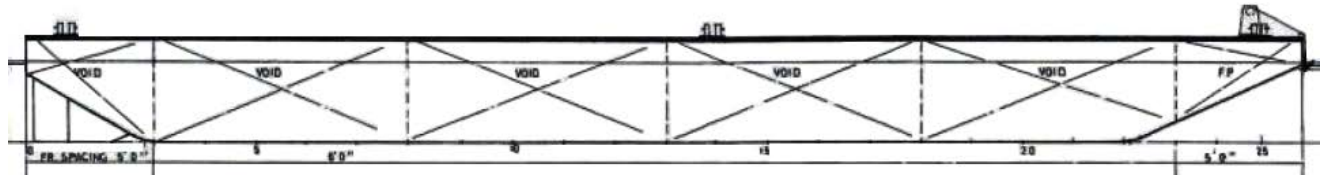
## CARGO CAPACITIES

|                                  |     |
|----------------------------------|-----|
| Deck Area Approx. m <sup>2</sup> | 600 |
| Deck Strength T/m <sup>2</sup>   | 10  |

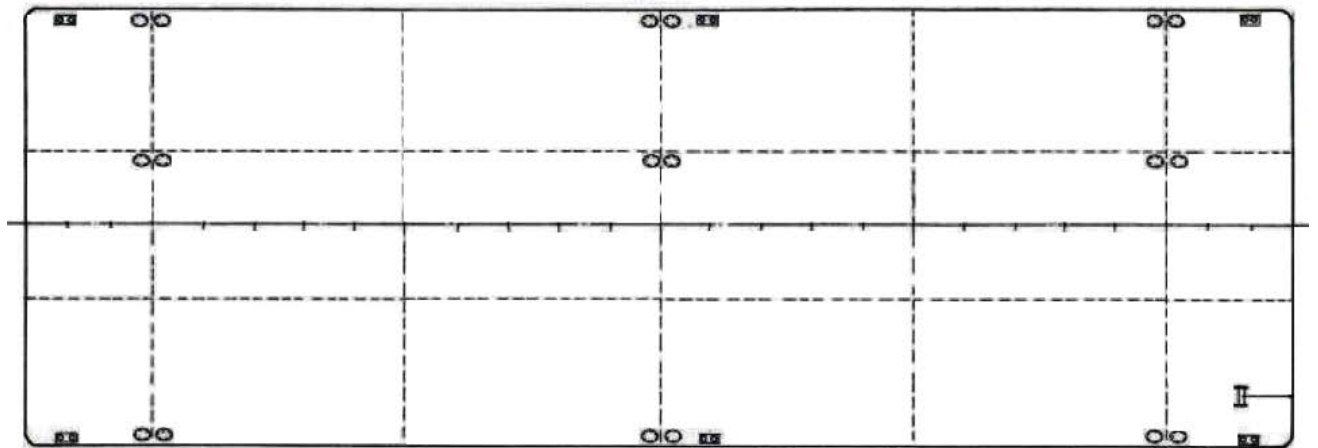
**ALL BARGES CAN BE FITTED WITH SPUD LEGS, SIDE WALLS, RAMP & MOORINGS BY REQUEST.**



### GENERAL ARRANGEMENT PLAN - GTO 152



**SIDE VIEW**



**TOP VIEW DECK LEVEL**