



# GTO 157

BARGE: SPUD



## PRINCIPAL PARTICULARS

Built	2015
Builder	Nass Marine Services, Bahrain
Flag	Bahrain
Official No.	BN7065
Class	ABS
Class No.	15265195
GRT	609
NRT	182
Deadweight (T)	1492
Lightship (T)	378
Displacement (T)	1870

## PRINCIPAL DIMENSIONS

Length (m) LOA/LBP	45.72 / 43.89
Breadth (m)	15.24
Depth (m)	3.66
Max. Draft (m)	3.02

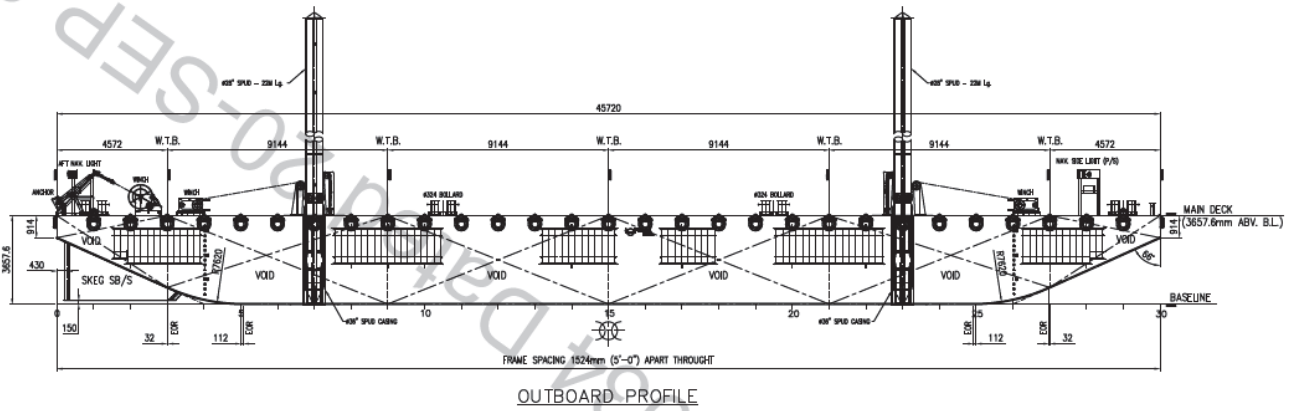
## CARGO CAPACITIES

Deck Area Approx. m <sup>2</sup>	600
Deck Strength T/m <sup>2</sup>	15

**ALL BARGES CAN BE FITTED WITH SPUD LEGS, SIDE WALLS, RAMP & MOORINGS BY REQUEST.**

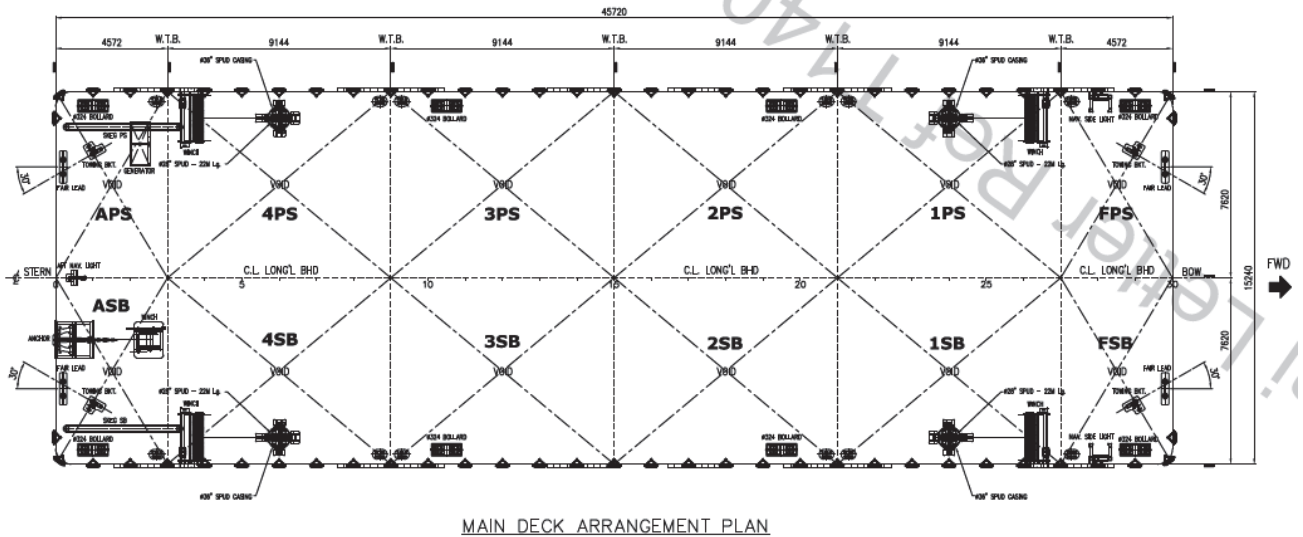


### GENERAL ARRANGEMENT PLAN - GTO 157



OUTBOARD PROFILE

### SIDE VIEW



MAIN DECK ARRANGEMENT PLAN

### TOP VIEW DECK LEVEL