



# GTO 1701

BARGE: SPUD



## PRINCIPAL PARTICULARS

Built	2006
Builder	PT. Natwell Shipyard Batam, Indonesia
Flag	Bahrain
Port of Registry	Bahrain
Official No.	BN8055
Class	DNV GL
Class No.	G112703
GRT	897
NRT	270
Lightship (T)	493.725

## PRINCIPAL DIMENSIONS

Length (m)	54.86
Breadth (m)	18.29
Molded Depth (m)	3.66
Molded Draft (m)	2.94

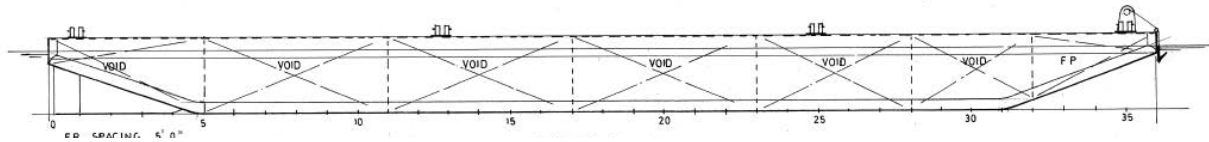
## DECK EQUIPMENT

Spuds	2 Nos, 19m Length Dia 980mm
-------	-----------------------------

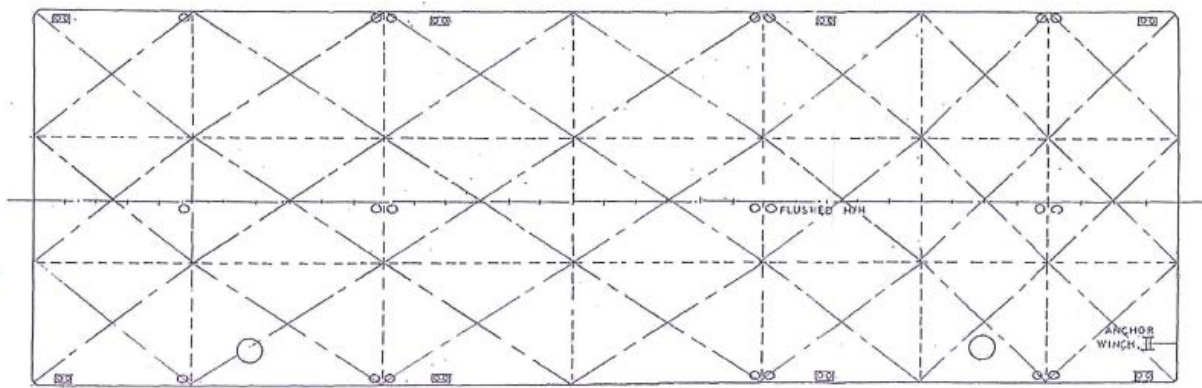
**ALL BARGES CAN BE FITTED WITH SPUD LEGS, SIDE WALLS, RAMP & MOORINGS BY REQUEST.**



## GENERAL ARRANGEMENT PLAN - GTO 1701



**SIDE VIEW**



**TOP VIEW DECK LEVEL**