



GTO 1901

BARGE: SPUD



PRINCIPAL PARTICULARS

Built	2015
Builder	Nass Marine Services
Flag	Bahrain
Official No.	BN7049
Class	ABS
Class No.	15262043
GRT	979
NRT	293
Lightship (T)	N/A
Deadweight (T)	2399
Displacement (T)	2940

PRINCIPAL DIMENSIONS

Length (m) LOA/LBP	54.86 / 52.67
Breadth (m)	18.29
Depth (m)	3.96
Max. Draft (m)	3.22

CARGO CAPACITIES

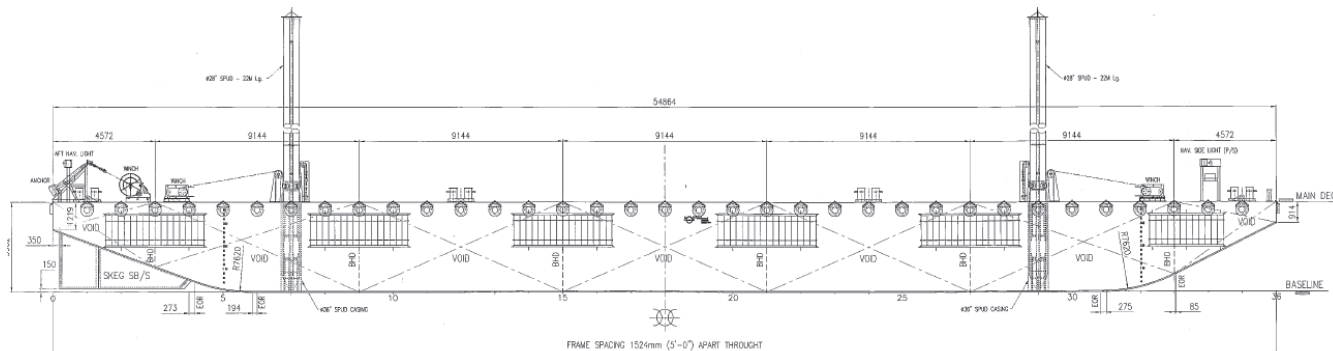
Deck Area Approx. m ²	900
Deck Strength T/m ²	15

Barge equipped with 2x spuds on Port and SB operated by individual winches

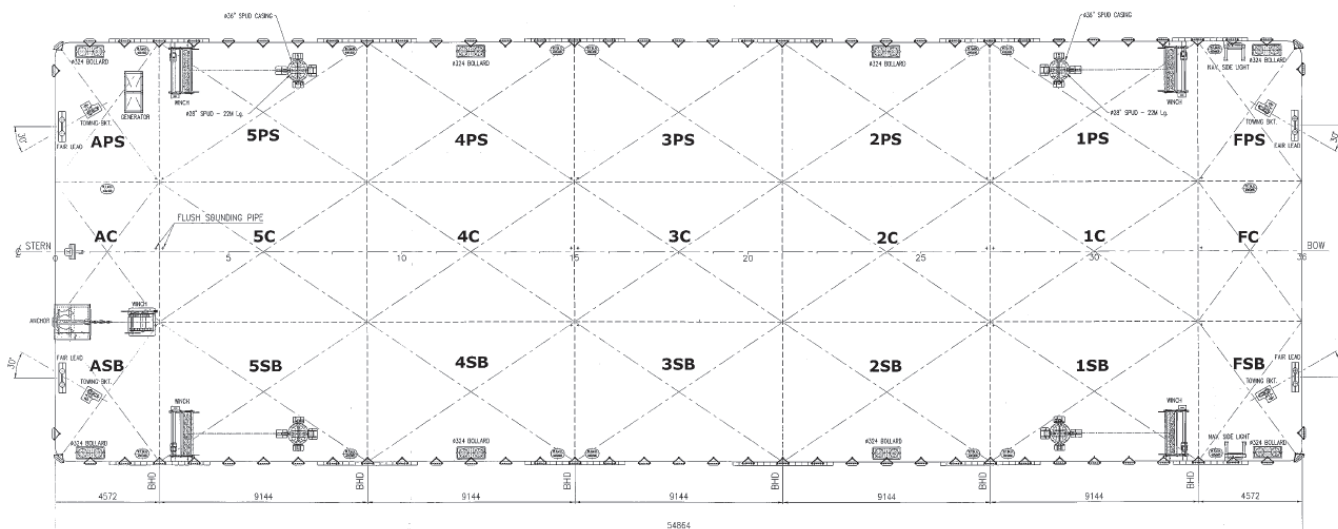
ALL BARGES CAN BE FITTED WITH SPUD LEGS, SIDE WALLS, RAMP & MOORINGS BY REQUEST.



GENERAL ARRANGEMENT PLAN - GTO 1901



SIDE VIEW



TOP VIEW DECK LEVEL

Page — 2 The information contained in this data sheet is for guidance purposes only and may be subject to changes. © Al Jazeera Shipping Co W.L.L. All rights reserved.