



# GTO 1902

BARGE: SPUD



## PRINCIPAL PARTICULARS

Built	2015
Builder	Nass Marine Services
Flag	Bahrain
Official No.	BN7072
Class	ABS
Class No.	15265196
GRT	979
NRT	293
Lightship (T)	541
Deadweight (T)	2411
Displacement (T)	2953

## PRINCIPAL DIMENSIONS

Length (m) LOA/LBP	54.86 / 52.67
Breadth (m)	18.29
Depth (m)	3.96
Max. Draft (m)	3.22

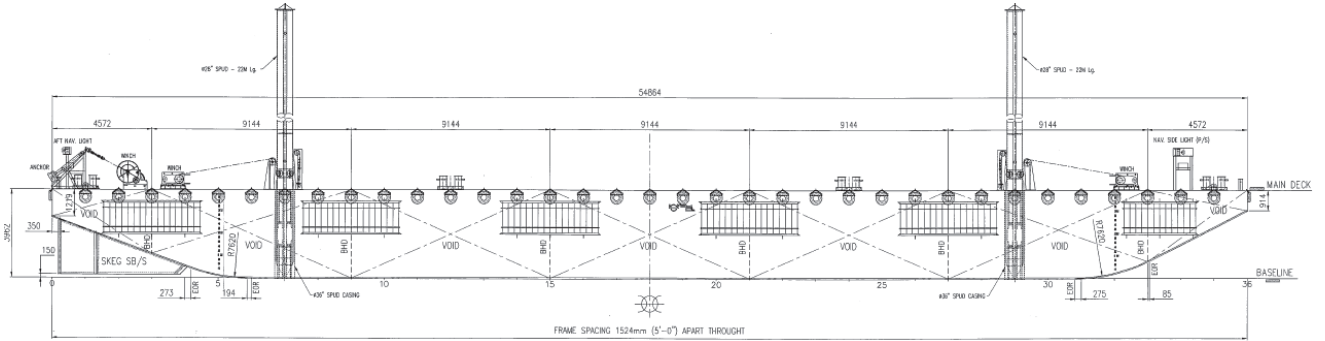
## CARGO CAPACITIES

Deck Area Approx. m <sup>2</sup>	900
Deck Strength T/m <sup>2</sup>	15

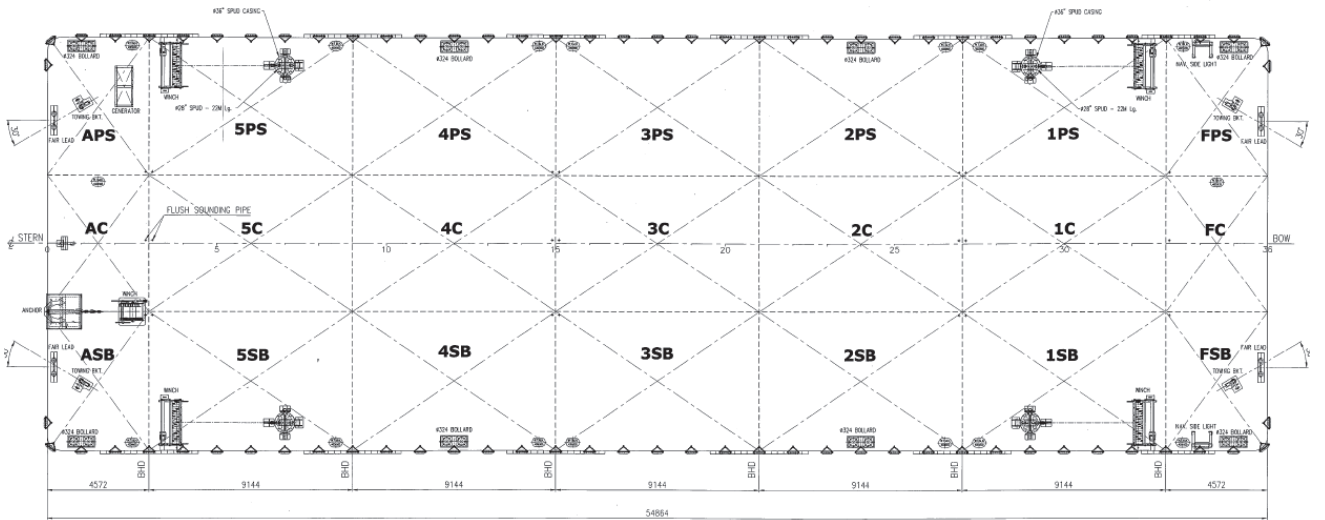
**ALL BARGES CAN BE FITTED WITH SPUD LEGS, SIDE WALLS, RAMP & MOORINGS BY REQUEST.**



### GENERAL ARRANGEMENT PLAN - GTO 1902



**SIDE VIEW**



**TOP VIEW DECK LEVEL**