



# GTO 1905

**BARGE: SPUD**



## PRINCIPAL PARTICULARS

Built	2017
Builder	Nass Marine Services, Bahrain
Flag	Bahrain
Official No.	BN8002
Class	ABS
Class No.	17271014
GRT	979
NRT	293
Lightship	541.5
Deadweight (T)	2398.8
Displacement (T)	2940.3

## PRINCIPAL DIMENSIONS

Length (m) LOA/LBP	54.86 / 52.67
Breadth (m)	18.29
Depth (m)	3.96
Max. Draft (m)	3.22

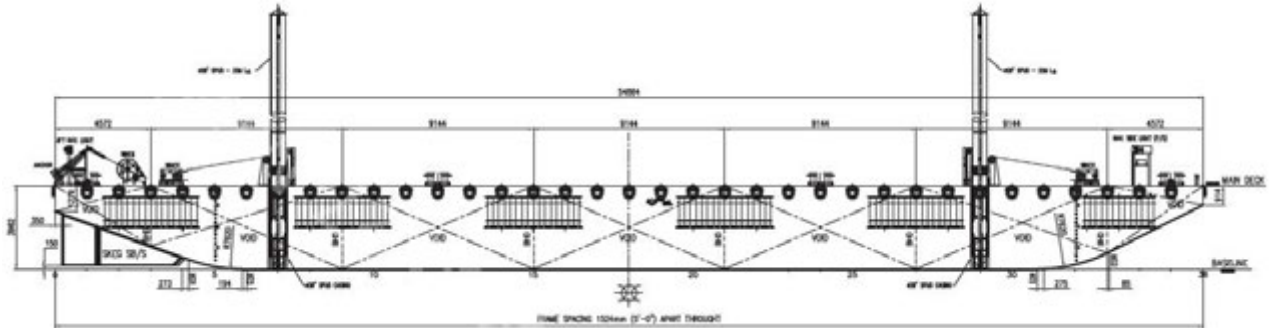
## CARGO CAPACITIES

Deck Area Approx. m <sup>2</sup>	900
Deck Strength T/m <sup>2</sup>	15
2x Spud Fwd/Aft	4 + Winches

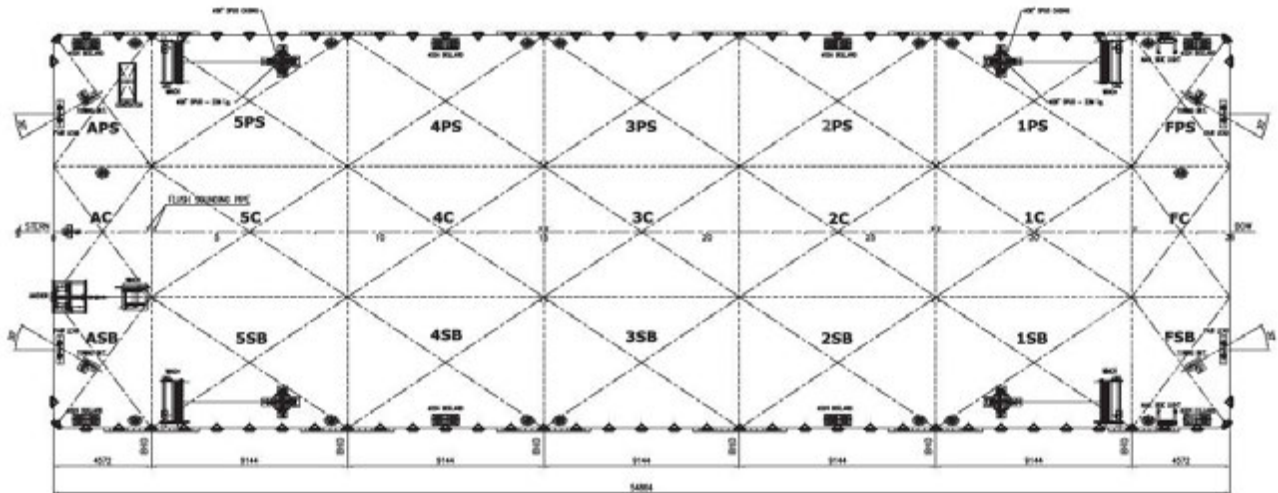
**ALL BARGES CAN BE FITTED WITH SPUD LEGS, SIDE WALLS, RAMP & MOORINGS BY REQUEST.**



## GENERAL ARRANGEMENT PLAN - GTO 195



### SIDE VIEW



### TOP VIEW DECK LEVEL