



# GTO 196

**BARGE: FLAT TOP**



## PRINCIPAL PARTICULARS

Built	2004
Builder	Aker Tulcea SA, Romania
Flag	Bahrain
Port of Registry	Bahrain
Official Numb.	BN 8066
Class	ABS
GRT	907
NRT	273
Lightship (T)	562
Deadweight (T)	1568

## DECK EQUIPMENT

Bow Anchor Windlass	1 set
Anchor	1x hall type, 700 kg
Anchor Chain	6x shackles (26 mm) on each side
Chain Locker	1
Smith Bracket	2 with WLL = 34 T

## PRINCIPAL DIMENSIONS

Length (m)	57.64
Breadth (m)	16.49
Depth (m)	3.50
Draft Molded (m)	2.20

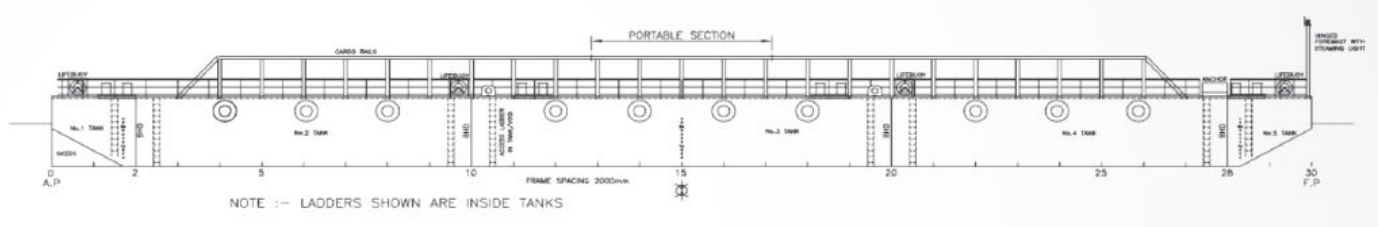
## DECK LOAD CAPACITY

Area (m <sup>2</sup> )	580
Deck Strength (t/m <sup>2</sup> )	5
Dry Bulk (T)	1568
Deck Cargo (T)	1568

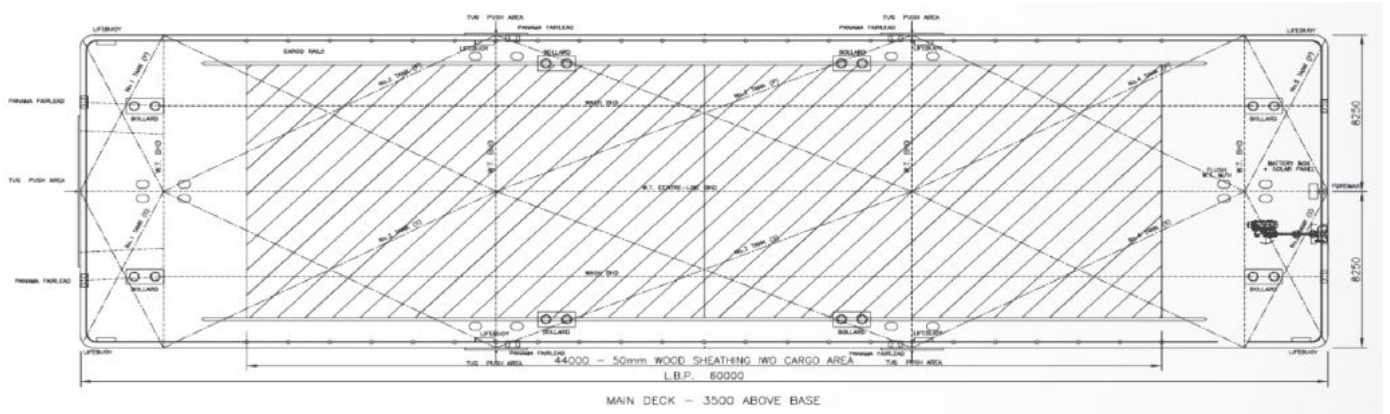
**ALL BARGES CAN BE FITTED WITH SPUD LEGS, SIDE WALLS, RAMP & MOORINGS BY REQUEST.**



### GENERAL ARRANGEMENT PLAN - GTO 196



### SIDE VIEW



### TOP VIEW DECK LEVEL