



GTO 2402

DECK CARGO BARGE



PRINCIPAL PARTICULARS

| | |
|------------------|---------------------------------|
| Built | 2015 |
| Builder | Yangzhou Hairun Shipping, China |
| Flag | Bahrain |
| Official No. | BN7083 |
| Class | Bureau Veritas |
| Class No. | 30078V |
| GRT | 1828 |
| NRT | 548 |
| Lightship (T) | 714.7 |
| Deadweight (T) | 4398 |
| Displacement (T) | 5113 |

PRINCIPAL DIMENSIONS

| | |
|--------------------|---------------|
| Length (m) LOA/LBP | 73.15 / 70.22 |
| Breadth (m) | 21.40 |
| Depth (m) | 4.90 |
| Max. Draft (m) | 3.80 |

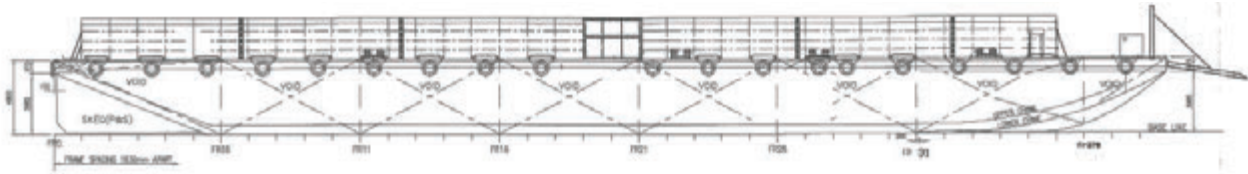
CARGO CAPACITIES

| | |
|-----------------------------------|------|
| Deck Area (m ²) | 1330 |
| Deck Strength (t/m ²) | 10 |

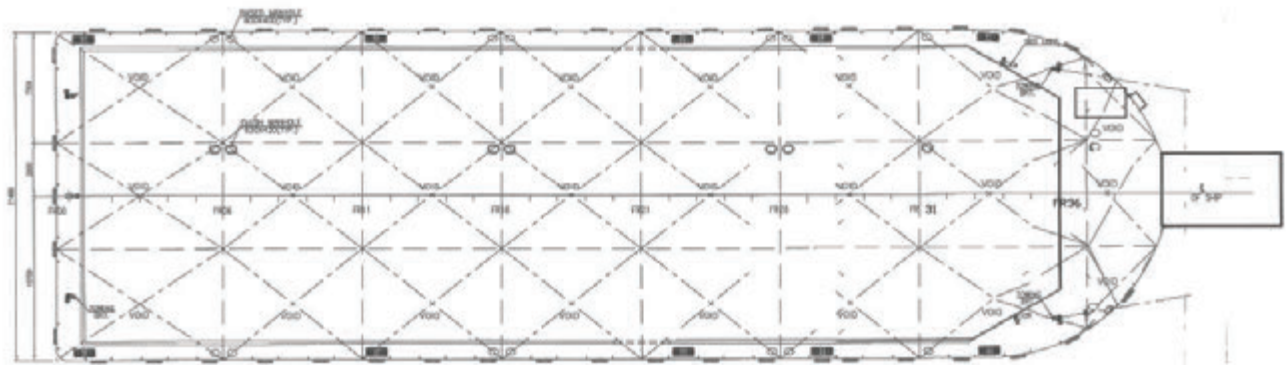
BARGES CAN BE FITTED WITH SIDE WALLS, RAMP & MOORINGS BY REQUEST.



GENERAL ARRANGEMENT PLAN - GTO 2402



SIDE VIEW



TOP VIEW DECK LEVEL