



# GTO 2507

**BARGE: (BALLAST) FLAT TOP**



## PRINCIPAL PARTICULARS

Built	2010
Builder	Nanjing Asiaprime Shipbuilding, China
Flag	Bahrain
Official No.	BN6043
Class	ABS
Class No.	11225564
GRT	2305
NRT	691
Deadweight (T)	4965.5
Displacement (T)	6090.5

## DECK EQUIPMENT

Stockless Anchor	Y
Anchor Winch	Y
Towing Brackets	Pull Force 80T
Mooring Bollards	Y
Navigation Lights	Y

## PRINCIPAL DIMENSIONS

Length (m) LOA/LBP	76.20 / 73.18
Breadth (m)	24.38
Depth (m)	4.88
Max. Draft (m)	3.62
Thickness: Deck	16mm
Sideshell	14mm
Bottom	12mm

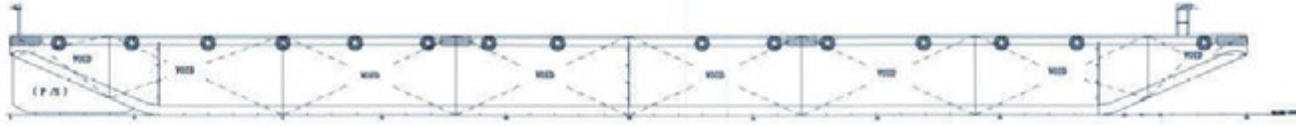
## CARGO CAPACITIES

Deck Area Approx. m <sup>2</sup>	1750
Deck Strength T/m <sup>2</sup>	20
Tanks 1P/S to 8P/S Ballast able	
Total tank capacity : Approx 6800m <sup>3</sup>	

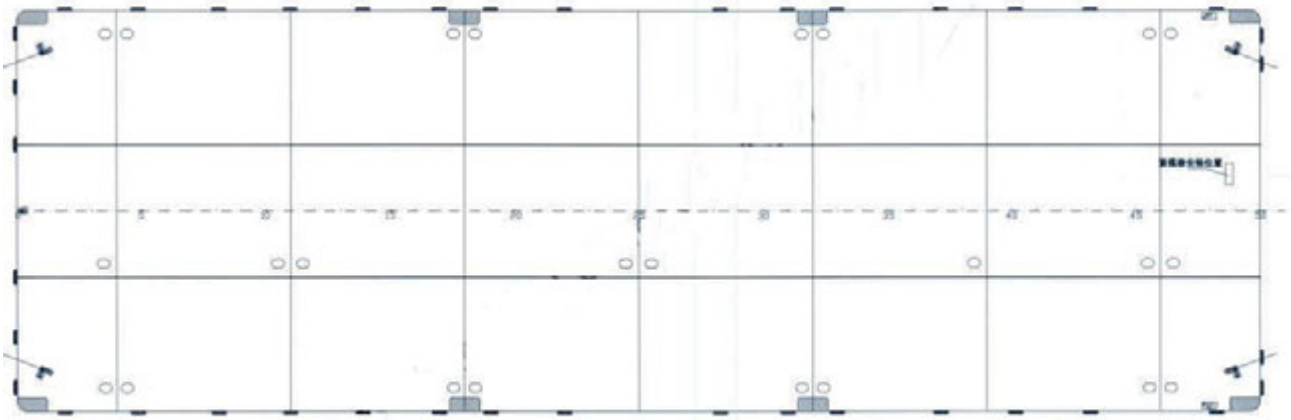
**ALL BARGES CAN BE FITTED WITH SPUD LEGS, SIDE WALLS, RAMP & MOORINGS BY REQUEST.**



## GENERAL ARRANGEMENT PLAN - GTO 2507



**SIDE VIEW**



**TOP VIEW DECK LEVEL**