



GTO 2509

BARGE: (BALLAST) FLAT TOP



PRINCIPAL PARTICULARS

Built	2012
Builder	Nanjing Shipbuilding, China
Flag	Bahrain
Official No.	BN7027
Class	BV
Class No.	27124K
GRT	2305
NRT	691
Deadweight (T)	4941
Displacement (T)	6121

DECK EQUIPMENT

Stockless Anchor	1290 kg
Anchor Winch	Hand Operated
Towing Brackets	2 sets SWL 80T
Mooring Bollards	8
Navigation Lights	3 with frame
Stanchions 4' Height	20x Port/StarB

PRINCIPAL DIMENSIONS

Length (m) LOA/LBP	76.20 / 73.18
Breadth (m)	24.38
Depth (m)	4.88
Max. Draft (m)	3.62
Thickness: Deck	16mm
Sideshell	14mm
Bottom	12mm

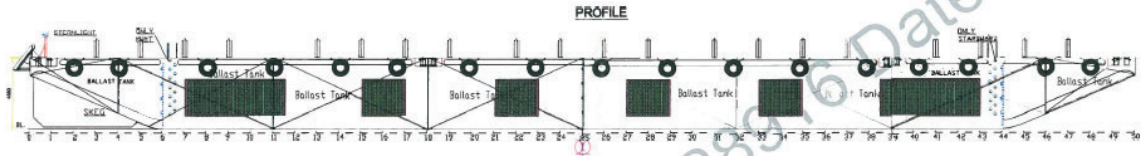
CARGO CAPACITIES

Deck Area Approx. m ²	1400
Deck Strength T/m ²	20
Tanks 1P/S to 8P/S Ballast able	
Total tank capacity : Approx 5250m ³	

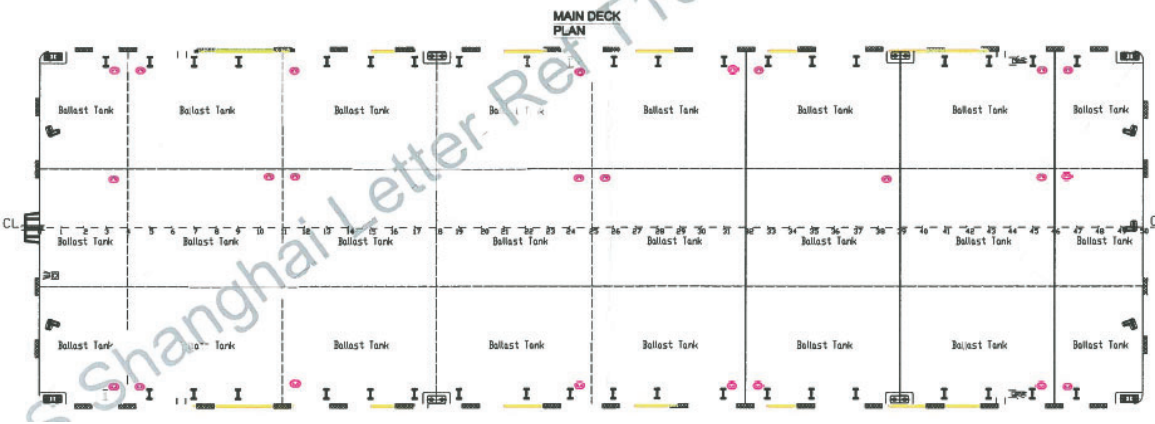
ALL BARGES CAN BE FITTED WITH SPUD LEGS, SIDE WALLS, RAMP & MOORINGS BY REQUEST.



GENERAL ARRANGEMENT PLAN - GTO 2509



SIDE VIEW



TOP VIEW DECK LEVEL