



# GTO 250

BARGE: SPUD



## PRINCIPAL PARTICULARS

Built	2017
Builder	Nantong Gangzha, China
Flag	Bahrain
Official No.	BN8001
Class	ABS
Class No.	YY270618
GRT	2337
NRT	701
Deadweight (T)	4448
Lightship (T)	1604
Displacement (T)	6052

## PRINCIPAL DIMENSIONS

Length (m) LOA/LBP	76.20 / 73.18
Breadth (m)	24.38
Depth (m)	4.88
Max. Draft (m)	3.60

## CARGO CAPACITIES

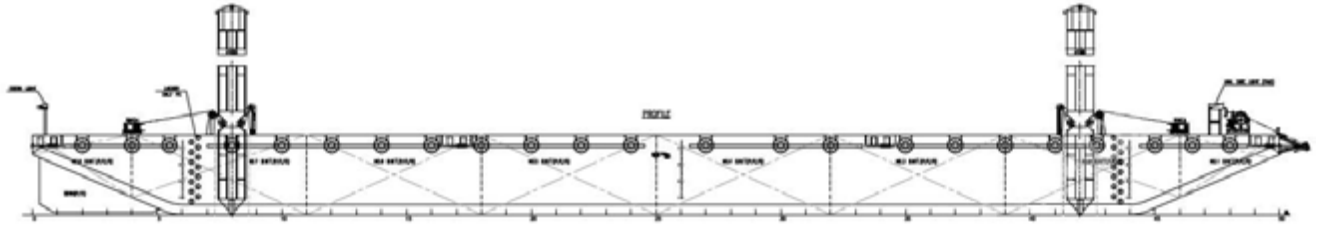
Deck Area Approx. m <sup>2</sup>	1400
Deck Strength T/m <sup>2</sup>	25
Spuds 2x FWD/AFT	4+Winches

\* Additional Stability for 400T & 650T Manitowoc Cranes to be Loaded on Deck

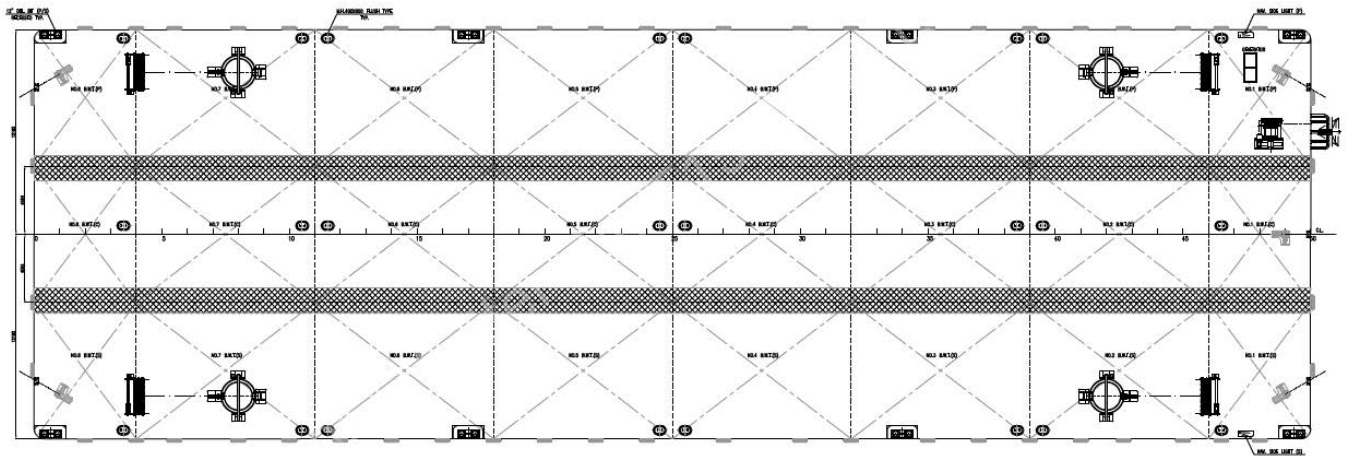
**ALL BARGES CAN BE FITTED WITH SPUD LEGS, SIDE WALLS, RAMP & MOORINGS BY REQUEST.**



## GENERAL ARRANGEMENT PLAN - GTO 250



**SIDE VIEW**



**TOP VIEW DECK LEVEL**