



GTO 2510

BARGE: DECK CARGO AND BALLAST TANK



PRINCIPAL PARTICULARS

Built	2014
Builder	Jiangsu Huatai Shipbldg Co, China
Flag	Bahrain
Official No.	BN7084
Class	ABS
Class No.	15258297
GRT	2314
NRT	691
Lightship (T)	1232
Deadweight (T)	4951
Displacement (T)	6183

PRINCIPAL DIMENSIONS

Length (m) LOA/LBP	76.20 / 73.18
Breadth (m)	24.38
Depth (m)	4.88
Max. Draft	3.62

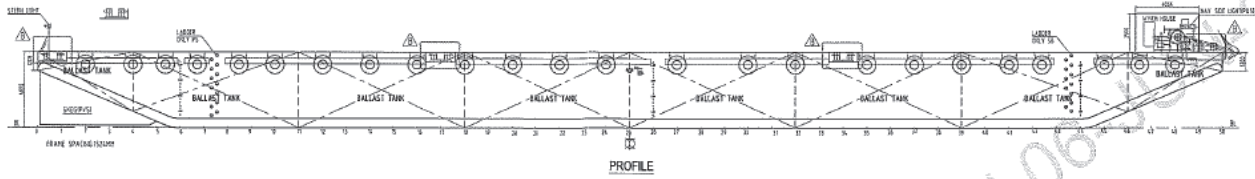
CARGO CAPACITIES

Deck Area Approx. m ²	1600
Deck Strength T/m ²	20
Anchor	1.5T
Anchor Winch	10T

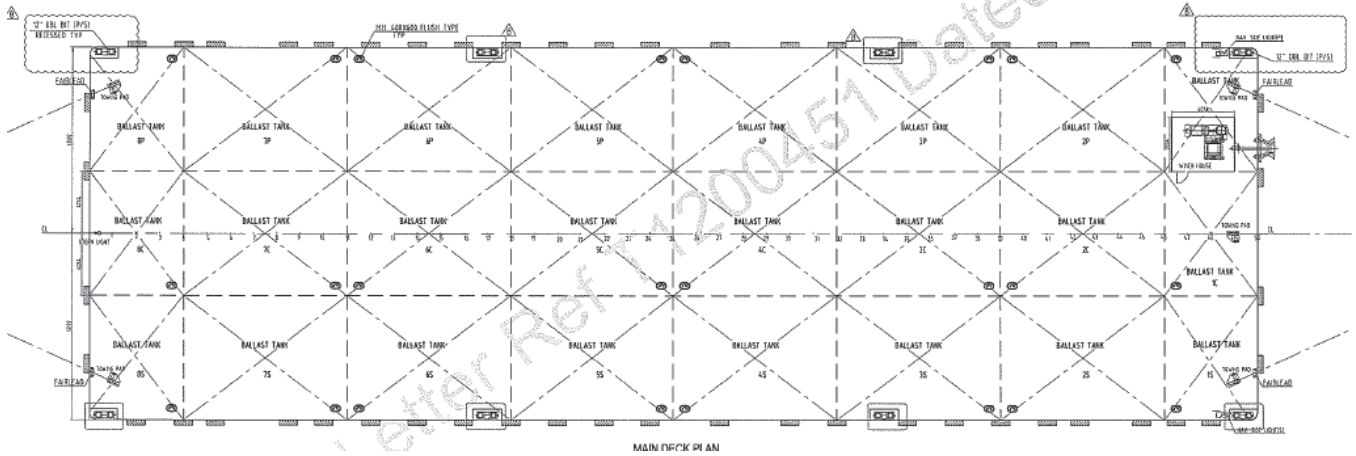
ALL BARGES CAN BE FITTED WITH SPUD LEGS, SIDE WALLS, RAMP & MOORINGS BY REQUEST.



GENERAL ARRANGEMENT PLAN - GTO 2510



SIDE VIEW



TOP VIEW DECK LEVEL

The information contained in this data sheet is for guidance purposes only and may be subject to changes. © Al Jazeera Shipping Co W.L.L. All rights reserved.