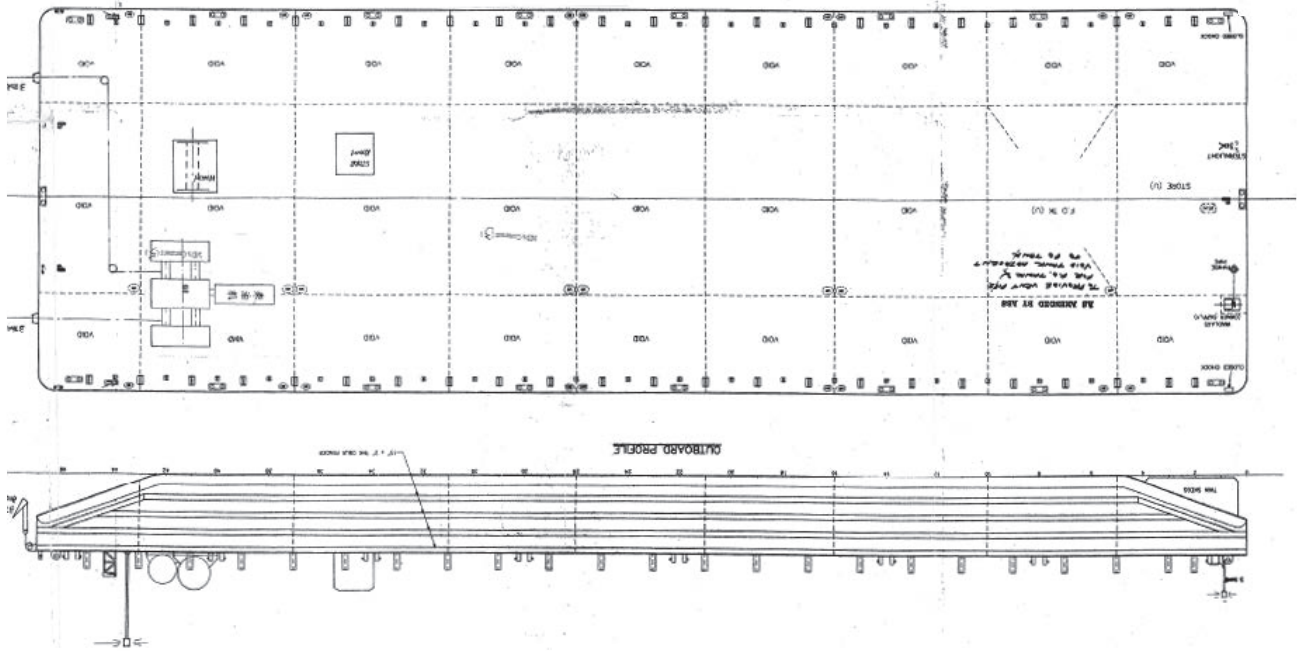




GTO 282

BARGE:FLAT TOP



PRINCIPAL PARTICULARS

Built	1995
Builder	Jiangdu Shipyard, China
Flag	Bahrain
Official No.	BN 5010
Class	ABS
Class No.	9532856
GRT	3385
NRT	1015
Deadweight (T)	8080
Lightship (T)	1550
Displacement (T)	9630

PRINCIPAL DIMENSIONS

Length (m) LOA	86.00
Breadth (m)	27.50
Depth (m)	5.50
Max. Draft	4.45

CARGO CAPACITIES

Deck Area Approx. m ²	2200
Deck Strength T/m ²	10

ALL BARGES CAN BE FITTED WITH SPUD LEGS, SIDE WALLS, RAMP & MOORINGS BY REQUEST.