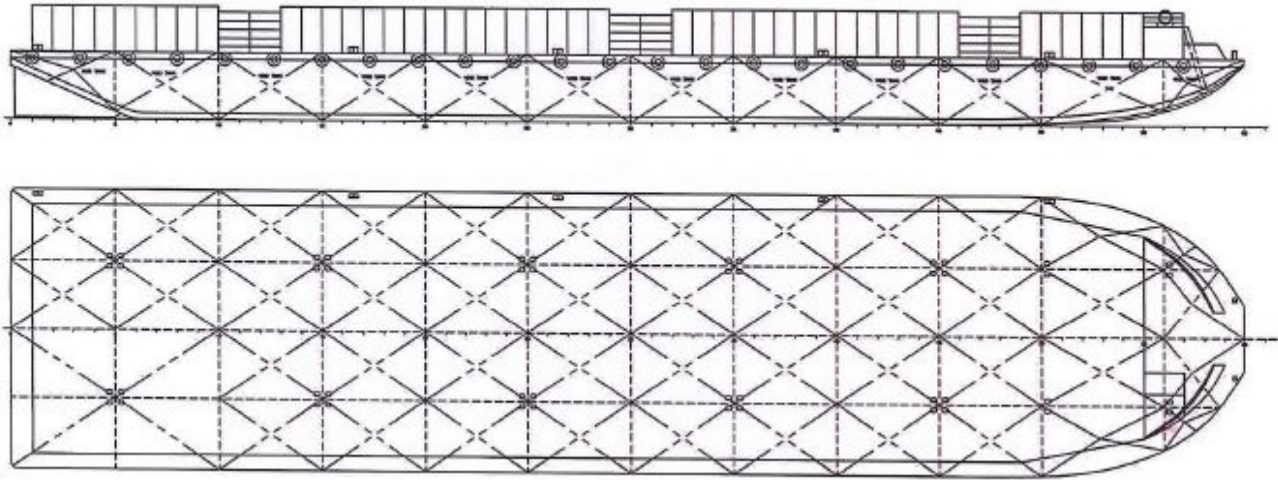




GTO 399

BARGE: STEEL DUMB BARGE



PRINCIPAL PARTICULARS

Built	2005
Flag	Bahrain
Port of Registry	Bahrain
Class	BV
GRT	5143
NRT	1543
Lightship (T)	2280.96
Deadweight (T)	11540

PRINCIPAL DIMENSIONS

Length (m) LOA/LBP	109.723 / 105.26
Breadth (m)	27.43
Depth (m)	6.71
Max. Draft (m)	5.19
Deck Strength (t/m2)	10

DECK EQUIPMENT

Mooring Bollards	2 x Single bollard, 5 x Double bollard P/S
Towing Brackers	2 x Fore Smit bracket, 2 x Aft Smit bracket
Anchor Winch	Hydraulic operated engine driven, SWL 5 T
Navigation Ligts	Solar type

ALL BARGES CAN BE FITTED WITH SPUD LEGS, SIDE WALLS, RAMP & MOORINGS BY REQUEST.