



# GTO II

## BARGE: PONTOON



### PRINCIPAL PARTICULARS

Built	1980
Builder	Damman, Saudi Arabia
Flag	Bahrain
Official No.	BN9106
GRT	96
NRT	96
Deadweight (T)	65

### PRINCIPAL DIMENSIONS

Length (m) LOA	20.00
Breadth (m)	10.00
Depth (m)	2.00
Max. Draft (m)	0.82

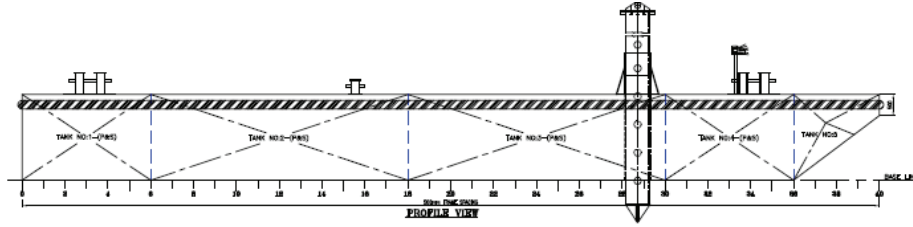
### CARGO CAPACITIES

Deck Area Approx. m <sup>2</sup>	80
Deck Strength T/m <sup>2</sup>	2
No of Thanks	12

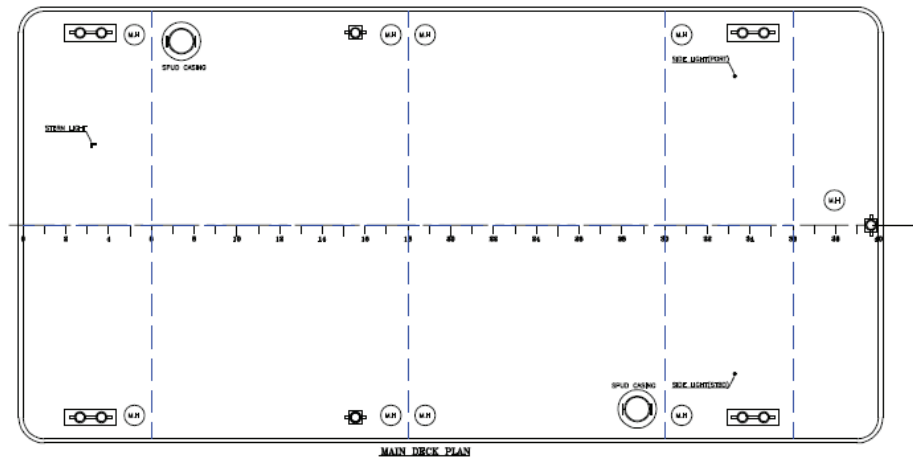
**ALL BARGES CAN BE FITTED WITH SPUD LEGS, SIDE WALLS, RAMP & MOORINGS BY REQUEST.**



### GENERAL ARRANGEMENT PLAN - GTO II



SIDE VIEW



TOP VIEW DECK LEVEL

