



GTO XXIII

FUEL OIL BARGE



PRINCIPAL PARTICULARS

Built	1974
Builder	Mazagon Dock, India
Flag	Bahrain
Official No.	BN4023
GRT	850
NRT	142
Deadweight (T)	1128
Displacement (T)	1353

PRINCIPAL DIMENSIONS

Length (m) LOA	42.00
Breadth (m)	11.30
Depth (m)	3.50
Max. Draft (m)	2.74

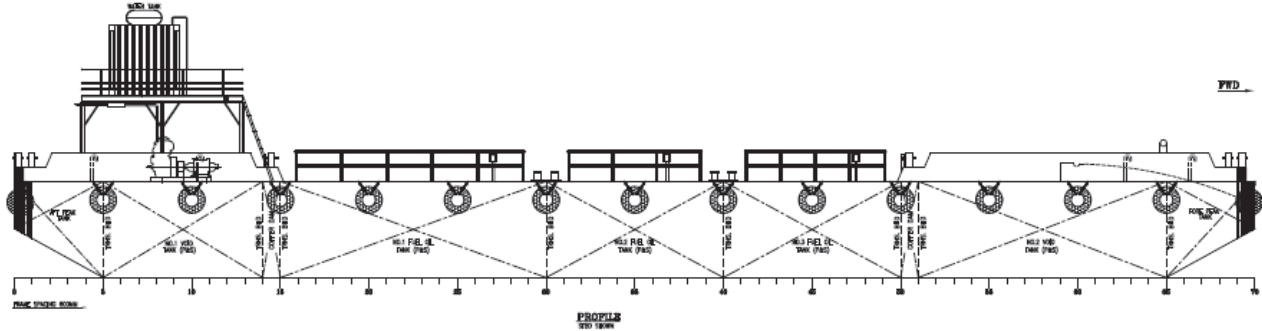
CARGO CAPACITIES

No. of Tanks	6
Fuel Oil (cubm)	828
Cargo Pump	85 m ³ /hr

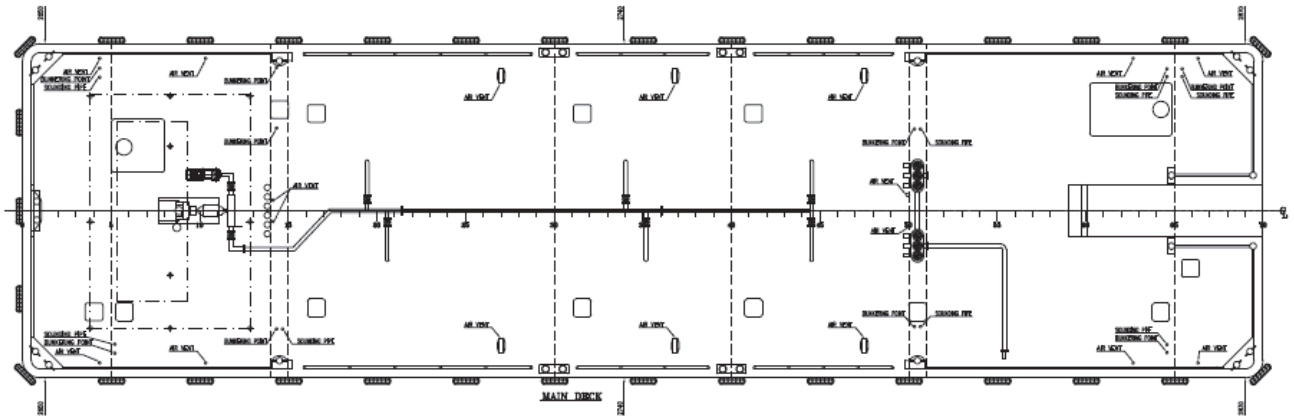
BARGES CAN BE FITTED WITH SPUD LEGS, SIDE WALLS, RAMP & MOORINGS BY REQUEST.



GENERAL ARRANGEMENT PLAN - GTO XXIII



SIDE VIEW



TOP VIEW DECK LEVEL