



GTO XXXII

BARGE: FRESH WATER



PRINCIPAL PARTICULARS

Built	2006
Builder	Kim Heng Marine Oilfield, Singapore
Flag	Bahrain
Official No.	BN4056
Class	Bureau Veritas
Class No.	10482V
GRT	329
NRT	216
Deadweight (T)	850
Lightship (T)	168
Displacement (T)	1018

PRINCIPAL DIMENSIONS

Length (m)	36.57
Breadth (m)	12.19
Depth (m)	3.05
Max. Draft (m)	2.45

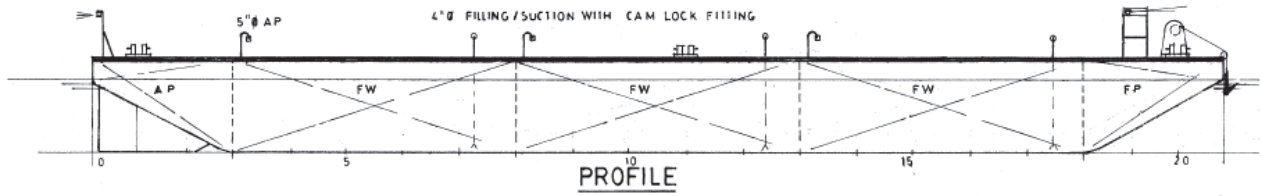
CARGO CAPACITIES

Deck Area (m ²)	400
Deck Strength (T/m ²)	10
Water Capacity (MT)	850
No. of Fresh Water Tanks	6
Manual Winch (T)	5
Stockless Anchor (Kg)	200

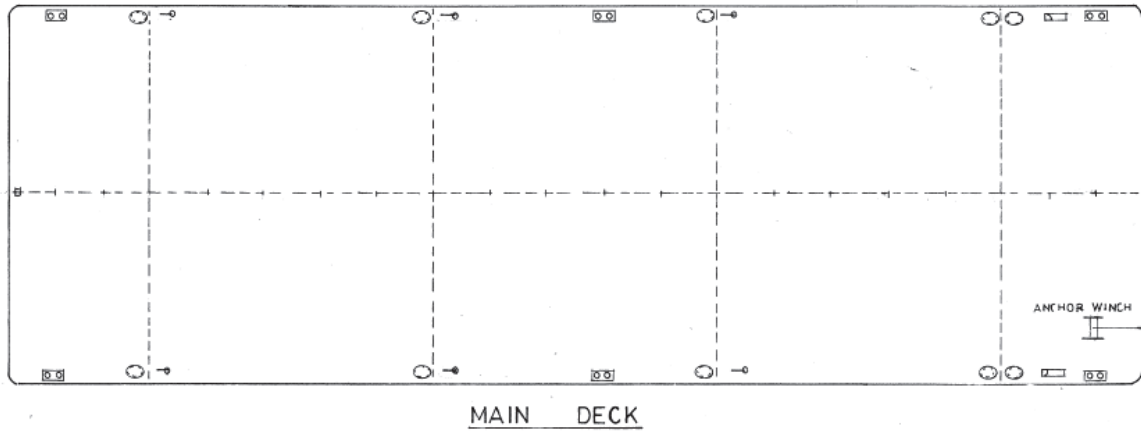
BARGES CAN BE FITTED WITH SPUD LEGS, SIDE WALLS, RAMP & MOORINGS BY REQUEST.



GENERAL ARRANGEMENT PLAN - GTO XXXII



SIDE VIEW



TOP VIEW DECK LEVEL