



GTO XXXVII

BARGE: DECK CARGO



PRINCIPAL PARTICULARS

| | |
|------------------|--------------------------|
| Built | 2007 |
| Builder | Nanjing Lan Sheng, China |
| Flag | Bahrain |
| Official No. | BN5030 |
| Class | DNV-GL |
| Class No. | 113324 |
| GRT | 259 |
| NRT | 78 |
| Deadweight (T) | 654 |
| Lightship (T) | 174 |
| Displacement (T) | 828 |

PRINCIPAL DIMENSIONS

| | |
|----------------|-------|
| Length (m) | 36.57 |
| Breadth (m) | 12.19 |
| Depth (m) | 2.44 |
| Max. Draft (m) | 1.80 |

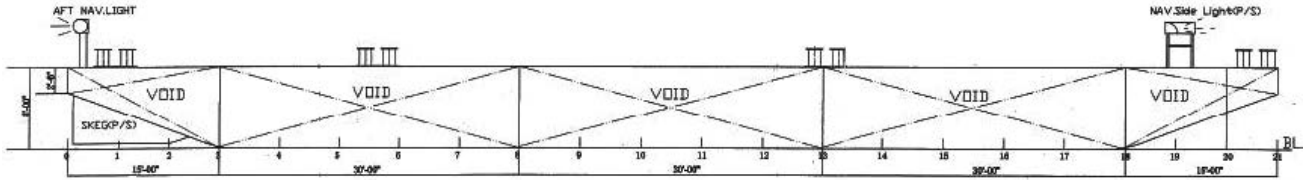
CARGO CAPACITIES

| | |
|----------------------------------|-----|
| Deck Area Approx. m ² | 400 |
| Deck Strength T/m ² | 5 |

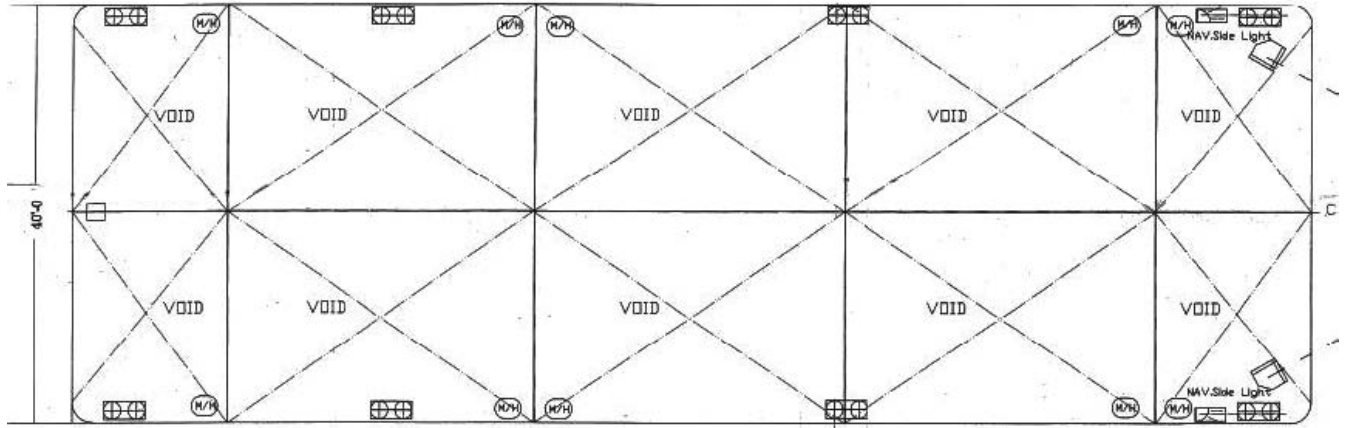
ALL BARGES CAN BE FITTED WITH SPUD LEGS, SIDE WALLS, RAMP & MOORINGS BY REQUEST.



GENERAL ARRANGEMENT PLAN - GTO XXXVII



SIDE VIEW



TOP VIEW DECK LEVEL