



INSTANT MARINER

ACCOMMODATION WORK BARGE (AWB)



PRINCIPAL PARTICULARS

Built/Rebuilt	1973/1982
Builder	Asia Pacific Shipyard, Singapore
Flag	Bahrain
Class	ABS
Class No.	7313779
Official No.	BN 1088
Call Sign	A9D2554
Accommodation	64
GRT	1069
NRT	793
Deadweight	490

MACHINERY

Generators	2x Caterpillar 225KVA, 240/480V, 50Hz 2x Caterpillar 162.5KVA, 230/460V, 60Hz
------------	--

PRINCIPAL DIMENSIONS

Length (m) LOA	45.72
Breadth (m)	15.24
Depth (m)	3.05
Max. Draft (m)	2.13

CARGO CAPACITIES

Fuel Oil (m ³)	120
Potable Water (m ³)	240
Deck Area (m ²)	241.50

NAVIGATION EQUIPMENT

GPS	1x Koden
Radar	1x Koden
Echo Sounder	1x Koden
VHF Radio	2x Sailor
VHF Portable Radio	2x Motorola
SSB Radio	1x JRC
GMDSS	1x ICOM
GMDSS Portable	2x ACR
Navtex	1x JRC

DECK EQUIPMENT

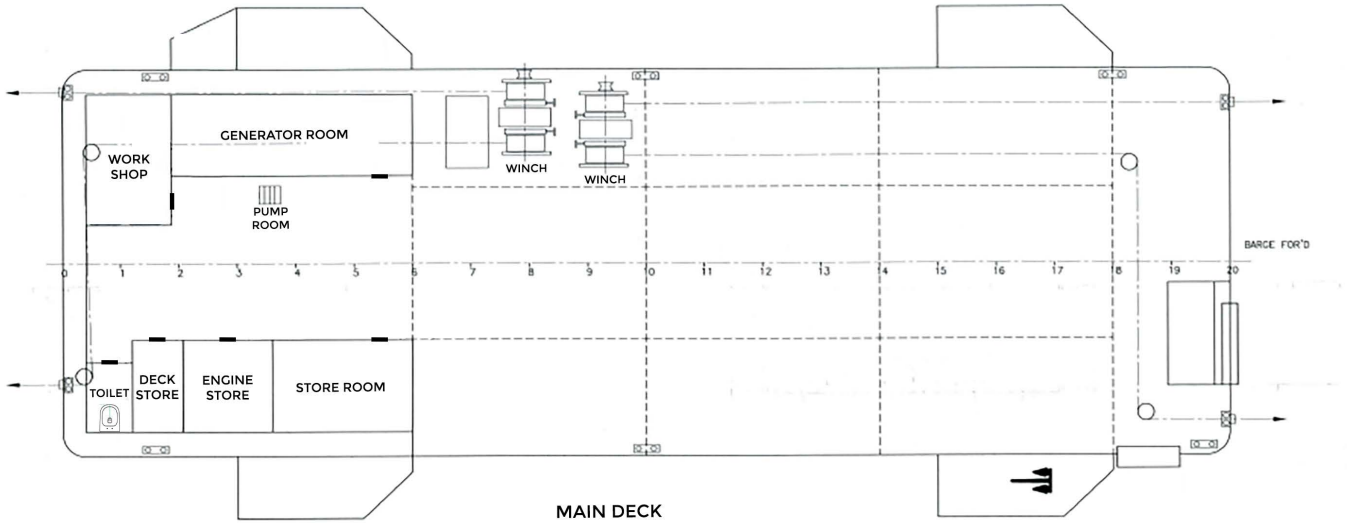
Anchor Winch	2x Hydraulic Double Drum - 17t
Anchors	4x 17t
Wire Rope	600m
Heli-Deck	Type Bell 212 Helicopter

ACCOMMODATIONS

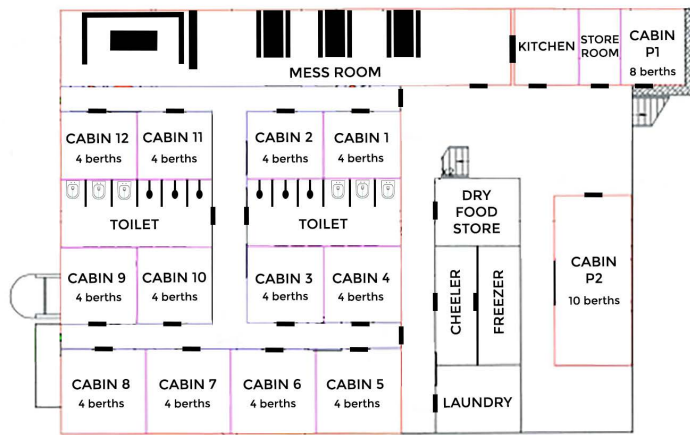
Capacity	Up to 78 berths in 20 cabins.
Main Deck	Workshop, Generator room, Toilet, Deck store, Engine store, Store room.
Accommodation Deck	Store room, Kitchen, Messroom, Dry food store, Cheeler/Freezer, Laundry, 2x Toilets, 1 Cabin x 8 berths, 1 Cabin x 10 berths, 12 Cabins x 4 berths.
Bridge Deck	Medical room, Toilet, Barge bridge, Radio room, 6 Cabins x 12 berths.



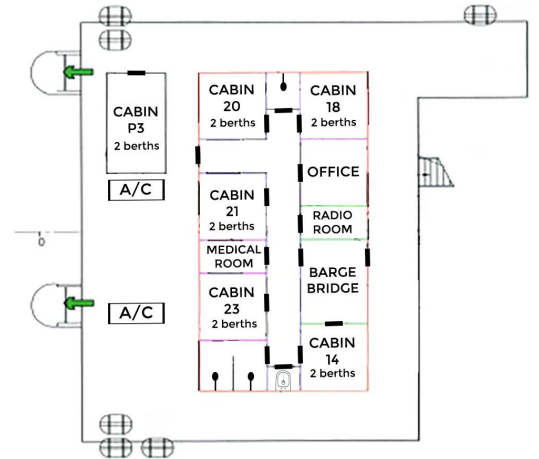
GENERAL ARRANGEMENT PLAN - INSTANT MARINER



MAIN DECK LEVEL



ACCOMMODATION DECK LEVEL



BRIDGE DECK LEVEL