



### PRINCIPAL PARTICULARS

Built	2013
Builder	Hyundai Engineering & Steel Industries, Korea
Flag	Bahrain
Class	K.R
GRT	1343
Lightship (T)	1400

### MACHINERY

Winch Power Pack Engine	1 x 250 HP
Jack Power Pack Engine	2 x 425 HP
Generator	2 x Cummins 6BT59D, 100 kW
Hydraulic Jacking Pump	2 x Cummins QSM11-DM, 317 kW
Hydraulic Winch Pump	2 x Cummins QSM7-DM, 186 kW
Mooring Winch	4 point, 10 T pull - 65 T brake hold
Air Compressor	Seawon
Water Maker	Reverse Osmosis KRO-006-SIS
Sewage Treatment	Sea Clean II - N-25CE, 750 ltr
General Service Pump	Gorio Pump, 26.4 kW - 55 m <sup>3</sup> /h
Water Ballast Pump	Gorio Pump, 36 kW - 200 m <sup>3</sup> /h
Bilge Separator	MTE MS-05, 0.5 m <sup>3</sup> /h
Emergency Diesel Power	Weich WP2-1D21E2, 24 kW

### PRINCIPAL DIMENSIONS

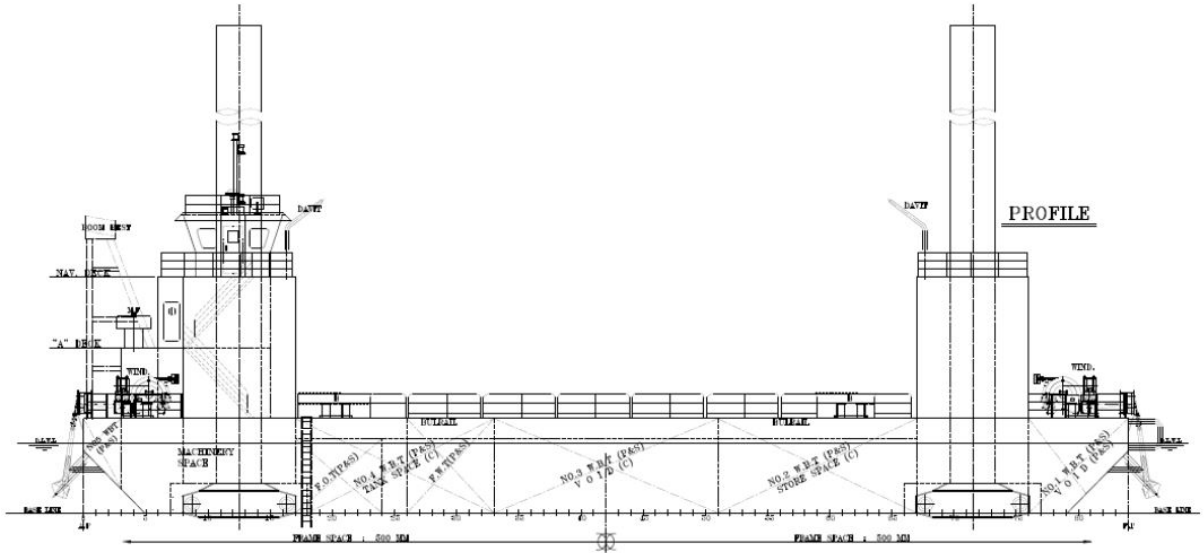
Length (m) LOA	42
Breadth (m)	24
Depth (m)	3.8
Draft (m)	2.8
Leg Length (m)	48
Leg Pipe (T)	74
Footing (T)	25
Jack House (T)	38

### CARGO CAPACITIES

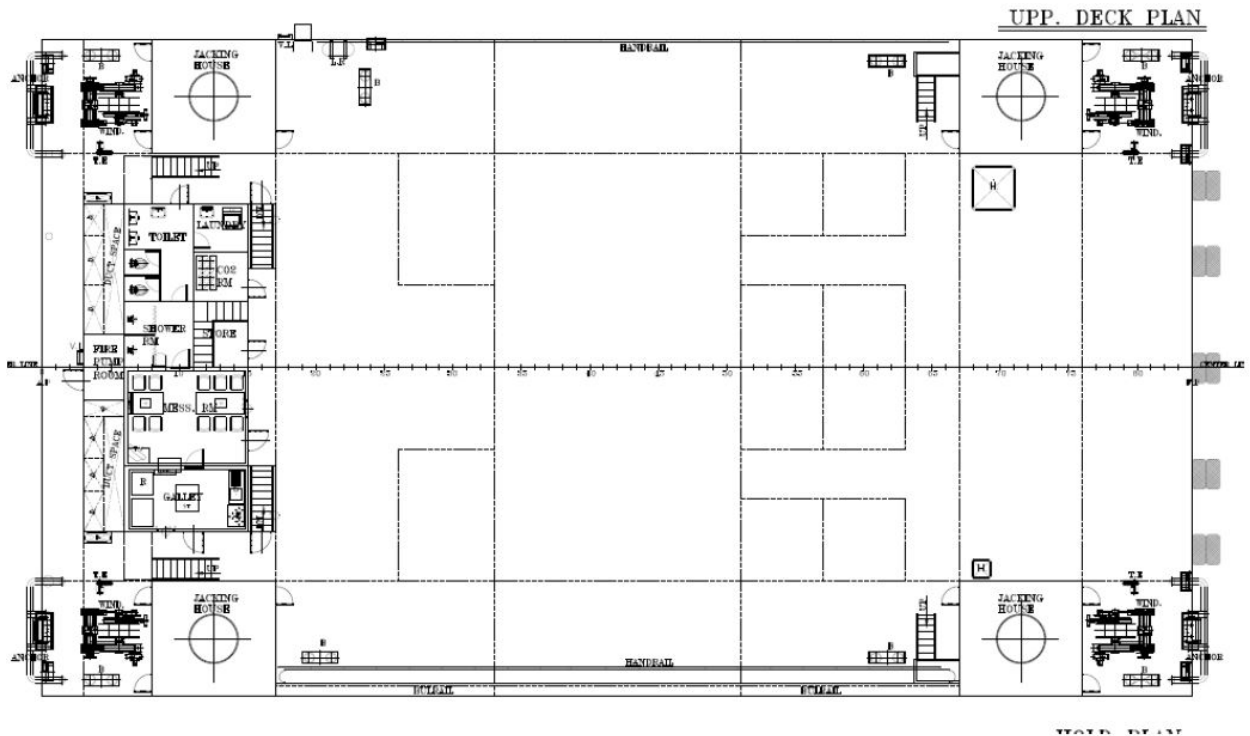
Holding Capacity (T)	3200
Lifting Capacity (T)	2400
Fresh Water Tank PS (m <sup>3</sup> )	62
Fresh Water Tank SB (m <sup>3</sup> )	62
Fuel Oil Tank PS (m <sup>3</sup> )	47
Fuel Oil Tank SB (m <sup>3</sup> )	47



**GENERAL ARRANGEMENT PLAN - JUB II**



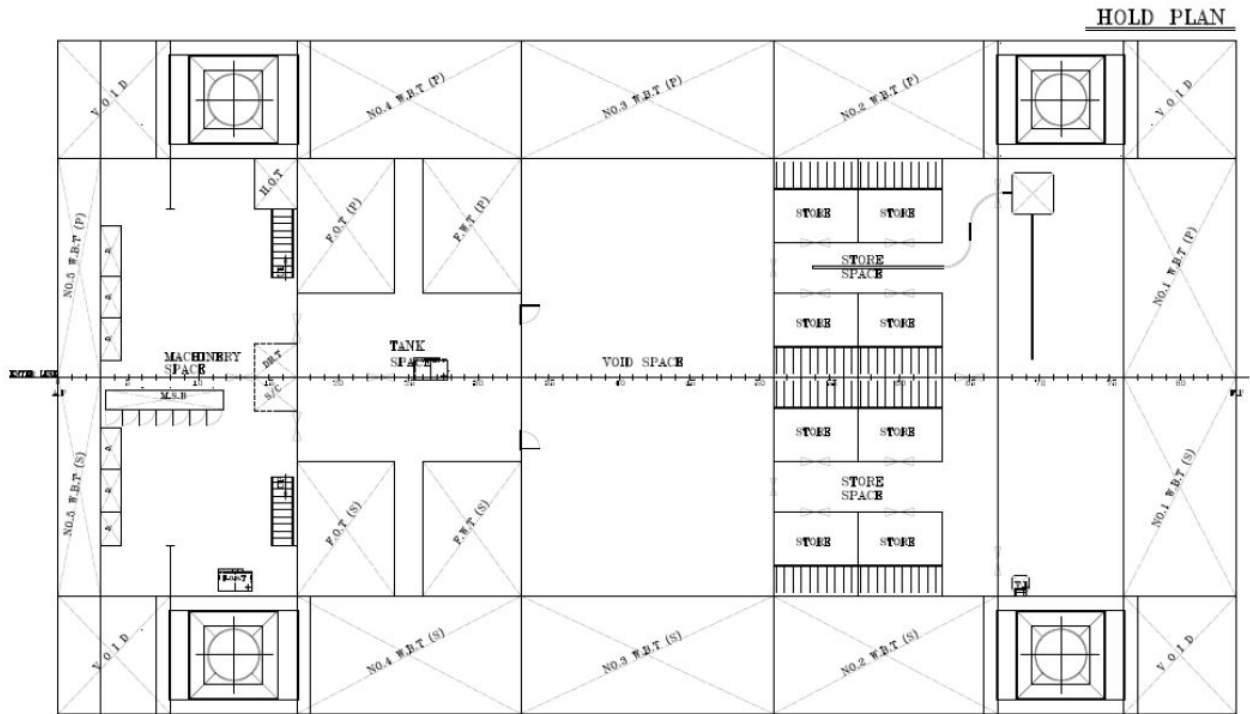
**SIDE VIEW**



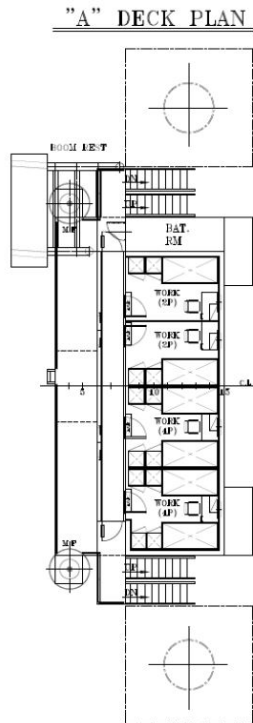
**TOP VIEW DECK LEVEL**



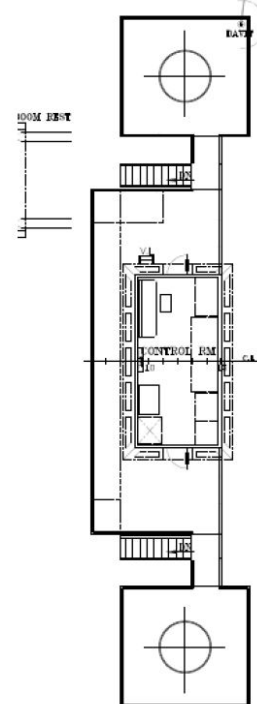
**GENERAL ARRANGEMENT PLAN - JUB II**



**LOWER DECK LEVEL**



**NAV. DECK PLAN**



**ACCOMMODATION DECK**

**NAVIGATION DECK**