



AL FAISAL 1

TOWING TUG (Off Shore Supply)



PRINCIPAL PARTICULARS

Built	1974
Builder	Halter Marine Services, USA
Flag	Bahrain
Class	☒
Class No.	7418579☒
Official No.	BN2048☒
IMO No.	7404059
Call Sign	A9D2631
GRT	679
NRT	203
Deadweight (T)	1014

MACHINERY

Main Engines	2x Nohab Polar
Power	2250 hp @ 825 rpm
Generator	2x Detroit Diesel 99Kw,440V,50Hz,3Ph
Propellers	2x SCSP Solid Cast Steel
Rudders	Twin Coupled Flat Blade
Bow Thruster	1x 300 hp, 3.5T

DECK EQUIPMENT

Anchors	2x 900Kg with 1 1/8" Chain,220m
---------	---------------------------------

NAVIGATION EQUIPMENT

AIS	Nauticast
GPS	Koden
Auto Pilot	Decca
Echo Sounder	Marine Tech Seamax
Radar	2x Furuno / 1 JRC
VHF Radio	4x Sailor
SSB Radio	JRC / ICOM
Navtex	Lo-Kata
Gyro	Sperry

PRINCIPAL DIMENSIONS

Length (m) LBP/LOA	50.72 / 54.76
Breadth (m)	11.58
Depth (m)	4.11
Max. Draft (m)	3.66

CARGO CAPACITIES

Fuel Oil (m ³)	370
Potable Water (m ³)	400
Deck Cargo (T)	600
Deck Area (m ²)	270
Deck Strength (T/m ²)	2.5
Freezer Space (m ³)	5
Cooler Space (m ³)	6.1

DISCHARGES RATES

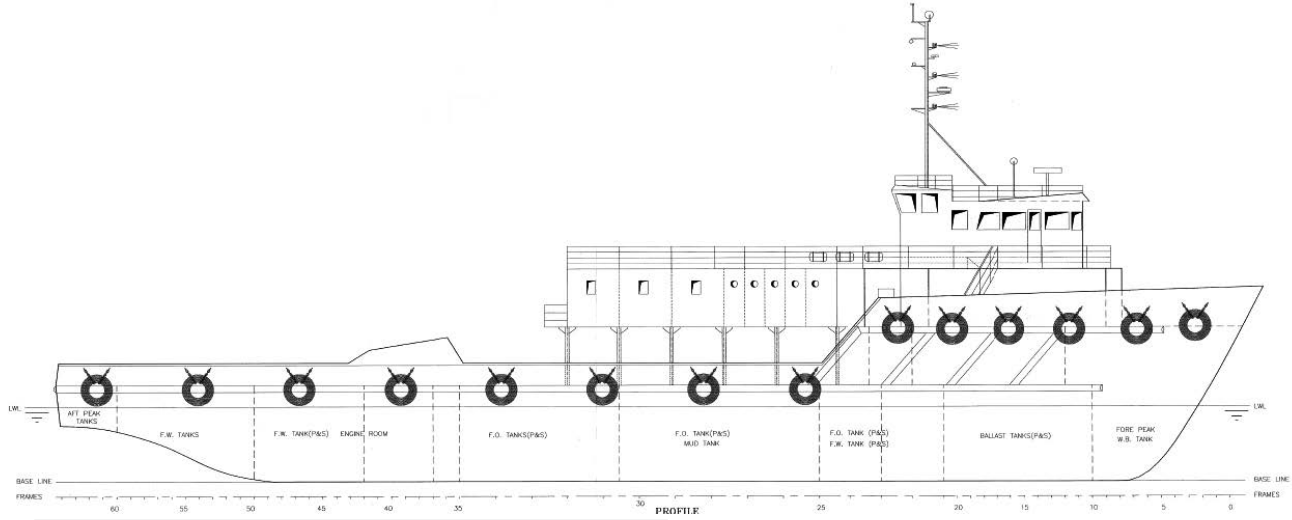
Fuel Oil 37.5m ³ /hr @178 / Potable Water 90.8m ³ /hr @ 145

SPEED & CONSUMPTION

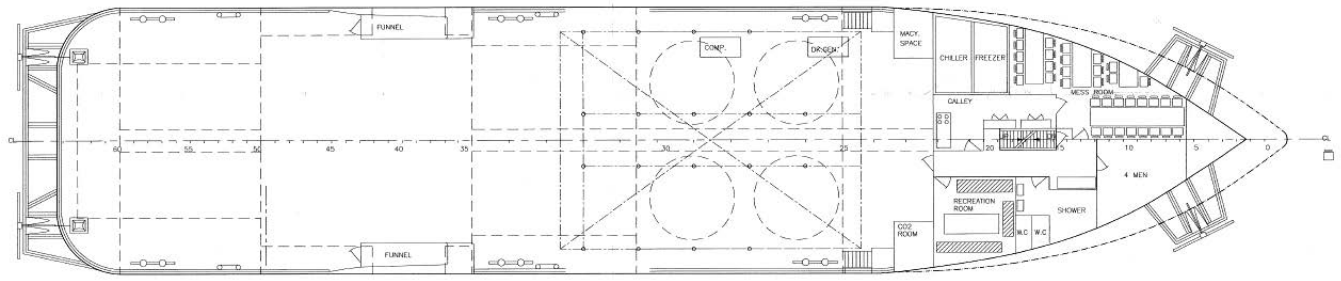
Max. Speed (Knots)	Approx. 12.5
Daily Consumption (T)	Approx. 4
Economical Speed (knots)	7
Fuel Type	MGO



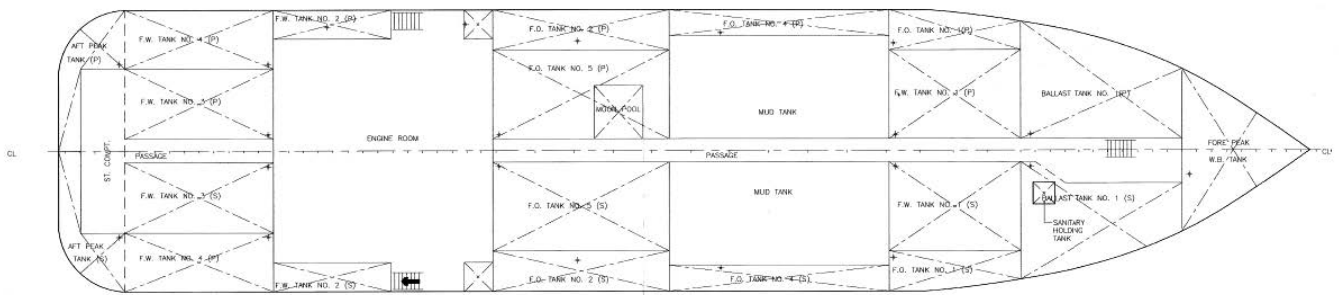
GENERAL ARRANGEMENT PLAN - AL FAISAL 1



SIDE VIEW



MAIN DECK VIEW



BELOW MAIN DECK VIEW